

## **Historic, Archive Document**

Do not assume content reflects current scientific knowledge, policies, or practices.



# WAYNESBORO NURSERIES, Inc.

WAYNESBORO, VIRGINIA

BRANCH NURSERY: Boxwood Gardens, Afton, Virginia

Spring 1941 and Fall 1941

**VIRGINIA'S LARGEST SOURCE OF SUPPLY** of dependable Fruit Trees and Ornamentals is offered by the Waynesboro Nurseries after eighteen years serving the planters with satisfactory plant material and service.

Our stock and service have been increased and improved from year to year. Improved varieties and methods of culture are added as tested and found practical. So our customers are not only provided with the best in varieties, but are given the advantage of saving in production cost, made possible by modern production methods. While you will find our prices low, our stock was never better.

**OUR STOCK AND PRICES.** Being governed strictly by price in buying Nursery Stock is false economy. The best is the cheapest, even though the initial cost may be more. Our prices are based on furnishing vigorous, healthy trees true to name, grown and sold on a small margin of profit and delivered in first class condition. For the benefit of those who are willing to use small sizes of trees and plants and wait for them to grow, we offer the Mail Order Sizes in Shrubs and small sizes of Fruit Trees for less than Standard sizes. Our small plants and trees are healthy, true to name, and will give

satisfactory results. We, however, believe in most cases it is economy to purchase medium or larger sizes.

**CERTIFICATE OF INSPECTION**, issued by Virginia State Entomologist, furnished with each shipment.

**TRANSPORTATION.** We are located on two trunk line railroads and also have motor freight lines out of Waynesboro, affording the best of transportation service.

**PRICES.** The prices quoted are f. o. b. our shipping point or for local delivery on our regular truck routes. We make no charge for packing and delivering to our local freight, express, or motor freight office.

**TERMS.** Cash with order unless otherwise arranged.

**REMITTANCES.** Remittances may be made by Postal Money Order, Express Money Order, or your personal check, if you prefer.

**LIBERAL REPLACEMENT TERMS.** While losses from transplanting our vigorous, carefully handled stock are at a minimum, there are always some losses to be expected, regardless of how careful both Nurseryman and

planter may be. We agree to share with our customers any losses from transplanting our stock by furnishing at half catalogue list price any plant material reported dead within twelve months after date of delivery, provided the original purchase was paid for as per sale terms and the plant material has been given reasonable attention.

**VARIETIES AND QUANTITIES.** In case you do not find listed the variety, quantity, or size desired, write for further information.

**MAKING UP ORDERS.** Do not fail to give sizes, quantities, and varieties wanted. Also give shipping point if different from post office, and approximately when you would like your stock shipped. We furnish 6 at dozen rate, 30 at 100 rate, and 300 at 1,000 rate, with the exception of Berry Plants, Bulbs and Perennials, which are sold not less than 50 at 100 rate, and 500 at 1000 rate, with exceptions noted.

**NOTICE OF WARRANTY.** While we are very careful to keep our varieties true to name, in the event they should prove otherwise, we cannot be responsible for more than the amount we receive for the stock.

## FRUIT TREES

Planters in various communities demand different sizes and varieties, so we offer a large list of both. All of our stock is clean, healthy, true to name, and bears a State Certificate of Inspection. Our list of varieties is carefully worked out. Whether you are planting a commercial orchard or a small home orchard you can make a suitable selection from our list.

### APPLES

For home orchards we especially recommend the following varieties in 3 and 4 yr. trees: Lowry, Maiden Blush, Paragon, New Red Stayman, Smoke House, Turley, Yellow Delicious, Yorking.

#### STANDARD VARIETIES

	Each	Doz.	100	1,000
1 yr. 18-24 in.	\$.25	\$2.50	\$18.00	\$140.00
1 yr. 2-3 ft.	.30	3.00	22.00	175.00
1 yr. 3-4 ft.	.40	4.00	28.00	225.00
1 yr. 4-6 ft.	.50	5.00	33.00	260.00
2 yr. 3-5 ft.	.65	6.50	36.00	300.00
2 and 3 yr. 5-6 ft.	.80	8.00	42.00	350.00

NOTE: 1 yr. Apple are usually whips, while 2, 3, and 4 yr. are branched.

#### VARIETIES

- Albamarle Pippin.** 1 yr. only. Yellowish Green. Winter.
- Baldwin.** An old-time Fall home orchard variety in the South.
- Ben Davis.** 1 yr. only. Well-known red Winter Apple.
- Bonum.** Red Fall Apple, medium size. Well known.
- Cortland.** A member of the McIntosh family. Larger, later, and better keeper.
- Delicious.** Red and green striped. One of the best known Winter varieties. Excellent quality.
- Early Harvest.** Well-known early greenish yellow Apple. Good in its season.
- Fall Cheese.** Old favorite. Red striped home orchard variety.
- Fall Pippin.** Yellow. An old-time Fall Apple having a place in every home orchard.
- Grimes Golden.** The most popular late Fall and early Winter yellow Apple.

**Grimes Golden, Double Worked.** 2 yr. only. Lives longer than the standard trees. 10c extra per tree.

**Hyslop Crab.** Excellent for jellies.

**Jonathan.** A late Fall, red Apple. Much in demand.

**King David.** 1 yr. only. Another medium sized red late Fall Apple.

**Lady.** 1 yr. only. Small, golden background, red blush; highly flavored; excellent quality. Demands unusually high prices, having sold for as much as \$20.00 per barrel on U. S. markets. Trees very scarce. 10c extra per tree.

**Liveland Raspberry.** Medium sized. Striped. Midsummer. Excellent quality.

**Lodi.** 1 yr. only. An improved, larger Yellow Transparent.

**Lowry.** Beautiful dark red Winter Apple, enjoying the reputation of selling for the highest price of any Apple grown in Virginia. Demands the highest prices on markets wherever known. In 1939 in local orchards the first crop of bloom was killed by a late frost, but the trees bloomed the second time and produced a full crop of fruit.

**Macoun.** 1 yr. only. Dark red, good size, rich flavor. Introduced by New York Experiment Station. Regular bearer.

**Maiden Blush.** 1 yr. only. Favorite Midsummer home and commercial variety. Golden background, red cheek.

**Mammoth Black Twig.** Large, dark red. Long keeper. Good quality. Rather shy bearer.

**McIntosh.** A red Winter variety in New England States, late Fall in Virginia.

**Milton.** 1 yr. only. Belongs to McIntosh family but ripens a month earlier.

**Mother.** Late bloomer. Medium sized, red export variety.

**N. W. Greening.** Yellowish green. Winter.

**Paragon.** Resembles Black Twig, but is more abundant bearer.

**Rome Beauty.** A well-known striped Winter Apple. Very near sweet.

**Smokehouse.** Aug.-Sept. Striped. Favorite home orchard variety.

(APPLES, Standard Varieties—Continued Page 2, Column 2.)

SAVE TIME IN GROWING FRUIT by planting our Super Size Apple Trees which have been twice transplanted, carefully pruned, and will afford fruit in a shorter time than the younger, smaller trees. We especially recommend the Super Size Trees for home orchard planting and for replanting in commercial orchards where cross pollination is needed. We can furnish the following varieties in 3 yr. 6-7 ft. size at 90c each, \$9.00 per doz., \$50.00 per 100. The varieties marked \* we can furnish in 4 yr. 7-8 ft. size at \$1.35 each, \$13.50 per doz., \$85.00 per 100.

<b>Ben Davis</b>	<b>New Red Stayman</b>
* <b>Bonum</b>	* <b>N. W. Greening</b>
* <b>Delicious</b>	* <b>Paragon</b>
* <b>Fall Cheese</b>	<b>Rome Beauty</b>
<b>Grimes Golden</b>	* <b>Smokehouse</b>
<b>King David</b>	<b>Stayman</b>
* <b>Lowry</b>	* <b>Sweet Paradise</b>
<b>Maiden Blush</b>	* <b>Turley</b>
<b>McIntosh</b>	<b>Winesap</b>
* <b>New Red</b>	* <b>Yellow Delicious</b>
<b>Delicious</b>	<b>York</b>
<b>New Red Rome</b>	<b>Yorking</b>



Vance Delicious—See Page 2.

**NEW RED STRAINS**

For the first time being offered at Standard Variety Prices.

**YORKING**

On May 28, 1935, was awarded United States Patent No. 125.

A New Solid Red York having all the good qualities of the famous old York and the tremendous advantage of being a Solid Red, a pleasing purplish red, and coloring two weeks earlier than the standard York.

Yorking is one of only a few Apples ever to be honored with a United States Patent. You can imagine what a Solid Red York—every Apple on the tree being a solid, bright red—would mean to the grower. That is exactly what we offer in the Yorking.

Place your order early for Yorking, as the Yorking is our largest seller and the supply seldom equals the demand.

**NEW SOLID RED DELICIOUS**

(Northwestern Strain)

A "Super" Delicious. An Apple with all the good qualities of the Common Delicious: Same size, same shape, same flavor, same texture and same ripening period, but the New Solid Red Delicious colors two to three weeks earlier and colors solid red without trace or sign of stripe, even into the stem and blossom ends.

**VANCE DELICIOUS**

1 yr. only

A strain of the New Solid Red Delicious differing from the standard New Red Delicious by coloring earlier. We consider this the best of all the New Red Delicious Strains. Supply for this season limited.

**NEW SOLID RED STAYMAN**

Sport of the well-known Stayman, having all the good qualities of the Common Stayman and the big advantage of being solid red in color instead of pale striped greenish coloring found in the Common Stayman. Write for further information.

**NEW SOLID RED JONATHAN**

Same size, quality and shape as Common Jonathan and differs only by coloring two weeks earlier and coloring solid red.

**NEW RED ROME**

The Northwestern Strain of Red Rome, listed by some as C&O. Red Strain. Now extensively planted in the East.

**GALLIA BEAUTY**

Pronounced by many as best of the New Red Rome Strains.

**NEW RED DUCHESS**

Differs from the Standard Duchess by having more color and coloring earlier in the season.

**NEW RED SPY**

1 yr. only. Same as Northern Spy with the exception of being a solid red.

**Our Trees Double Inspected**

PRONOUNCED FREE OF DISEASE by Virginia State Entomologist.

PRONOUNCED TRUE TO NAME by Professor Shaw, A National Authority on Identification of Varieties.

Professor Shaw, Mass. State College, reports:

**"TO WHOM IT MAY CONCERN:**

This is to state that we have examined for truency to name all the saleable two year Apple Stock of Waynesboro Nurseries, Inc., near Waynesboro, Virginia and as they now stand in the nursery row all varieties are, to the best of our knowledge and belief, true to name."

(Signed) (Signed)

A. P. FRENCH J. K. SHAW  
Professor of Pomology Research Professor of Pomology

(APPLES, Standard Varieties—Continued.)

**Stayman.** One of our most popular commercial Apples of the Winter varieties. Large, red, green striped.

**Summer Rambo.** Undoubtedly one of the best Summer varieties of its season. Large striped, excellent quality. Ripens in August.

**Summer Yellow Delicious.** 1 yr. only. A Golden Delicious which ripens in July. Most promising new Summer Apple known.

**Sweet Paradise.** Most popular Fall sweet Apple.

**Turley.** Somewhat resembles Stayman but has better color and is larger. Does not crack. Yellow flesh. More regular bearer than the Stayman.

**ONE TREE ORCHARD.** An Apple Tree on which four varieties are grafted, ripening early Summer, late Summer, Fall and Winter—affording fresh fruit over a period of several months. A 3 yr. tree, 5 to 6 ft., \$2.00 each; 2 for \$3.50.

**Virginia Beauty.** 1 yr. only. Resembles Delicious in quality and shape; darker and extra fine quality.

**Wealthy.** Late fall. Medium sized red.

**Williams Early Red.** 1 yr. only. One of the largest early Apples, ripening in July. Excellent home and commercial variety.

**Winesap.** Standard commercial variety, medium size. Solid red.

**Winter Banana.** 1 yr. only. Large golden yellow Fall variety of excellent quality.

**Yellow Delicious.** Resembles Grimes Golden but larger, more prolific and earlier bearer.

**Yellow Transparent.** The earliest Apple on our list. A very popular early Apple. Medium size and excellent for cooking purposes.

**York Imperial.** Most extensively planted Apple in Virginia but is now being displaced by Yorking, the Solid Red York.

**Town Talk.** Five varieties growing on one tree. See General Catalogue for description. 3 yr. 6-7 ft., \$2.50 each, two for \$4.50, 1 doz., \$24.00.

**PEACHES**

**A GOOD TIME TO PLANT PEACH**

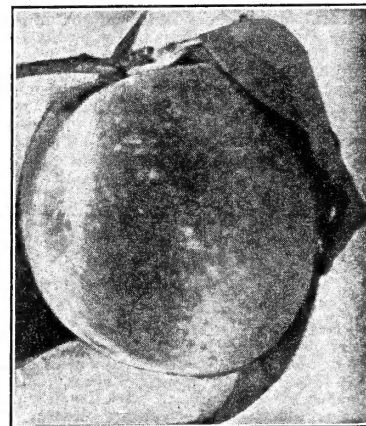
Peaches have always been a quick money crop and one of the most profitable fruit crops. Planting at this time on suitable land should prove profitable.

**MUCH DEPENDS ON THE TREES YOU PLANT**

Our Peach Trees are budded on the old-time native hardy seedling Peach, giving them the best root system possible and our buds are cut from bearing orchards, assuring our customers of trees true to name. Our sandy loam soil is also conducive to a vigorous, fibrous root system. Our modern tree digger enables us to dig trees with all their roots. Our experience in growing many million trees has taught us how to handle and deliver in such condition that the best of results may be expected.

With the many advantages we have in growing Peach we can quote our trees at very reasonable prices, seldom costing more than trees you could not afford to plant.

For your convenience we are listing our Peach in ripening order. If more complete descriptions are required write for Free Copy of our 44 page Planting Guide or, consult our local representative.



**Elberta Continues to be Our Best Seller**

Variety	Ripening Period	Class	Description
Mayflower.....	June 15th	Clingstone	Sells because of earliness
Red Bird.....	June 20th	Clingstone	White, large, firm, red, good shipper
Greensboro.....	June 25th	Semi-cling	Beautiful in appearance; hardy in bud
Early Rose.....	July 10th	Semi-cling	White, one of the best of the season
Cumberland.....	July 15th	Semi-free	White, large, firm
Mikado.....	July 15th	Semi-cling	Resembles Elberta; better quality
Alton.....	July 15th	Semi-free	Large, good quality
Carman.....	July 20th	Semi-free	White, regular bearer
<b>GOLDEN JUBILEE</b> .....	July 20th	Freestone	Yellow, large, good quality
Rochester.....	July 25th	Semi-free	Yellow, medium size, fair quality
Vedette.....	July 25th	Freestone	New Yellow Peach resembling Elberta
Hiley.....	July 25th	Freestone	White. Resembles Belle of Georgia
Early Elberta.....	August 1st	Freestone	Large, yellow freestone. Good shipper
Hale Haven.....	August 1st	Freestone	New, large, Yellow
Champion.....	August 1st	Semi-free	White, large, sure bearer
Slappy.....	August 1st	Freestone	Yellow, medium size, excellent quality
Valiant.....	August 5th	Freestone	More hardy in bud and better quality than Elberta. Yellow
Early Crawford.....	August 5th	Freestone	Yellow, old-time favorite
South Haven.....	August 5th	Freestone	New early Yellow. Good quality
Belle of Georgia.....	August 10th	Freestone	White, favorite canning variety
Elberta.....	August 15th	Freestone	Most popular yellow peach
Hale.....	August 15th	Freestone	Yellow, large, good shipper
<b>Brackett (Improved Elberta)</b> .....	August 20th	Freestone	Yellow. Better quality than Elberta
Gage Elberta.....	August 20th	Freestone	Yellow. A more hardy, disease-resistant strain
Late Crawford.....	August 20th	Freestone	Favorite yellow
Shipper's Late Red.....	August 20th	Freestone	Closely resembles Hale
Roberta.....	August 25th	Freestone	Yellow. Resembles Elberta
Late Elberta.....	September 1st	Freestone	Quality and appearance equaling Elberta
Salwey.....	September 1st	Freestone	Yellow, best of its season
Heath.....	September 25th	Clingstone	Most popular late white variety
Krummels.....	October 5th	Freestone	Yellow; red cheek. Best of season.

**PEACH**

	Each	Doz.	100	1000
18-24 in., Medium.....	.15	\$ 1.50	\$ 7.50	\$ 60.00
18-24 in., Heavy.....	.20	2.00	9.00	70.00
2-3 ft., Medium.....	.25	2.50	11.00	85.00
2-3 ft., Heavy.....	.30	3.00	14.00	110.00
3-4 ft., Medium.....	.35	3.50	16.00	125.00
3-4 ft., Heavy.....	.45	4.50	18.50	150.00
4-6 ft., Select.....	.60	6.00	24.00	200.00

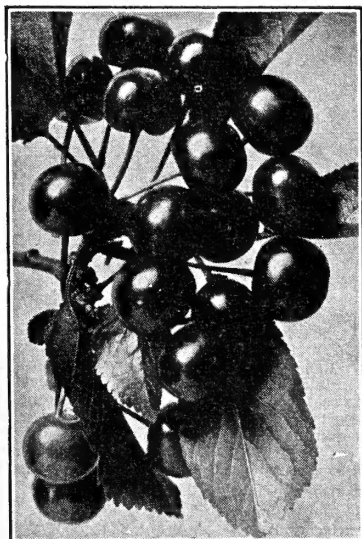
**100-Peach Home Orchard** consisting of five varieties (our selection), ripening at various seasons. Trees to be 1 yr., 18 to 24 inch Medium, for only \$6.50. 50 trees for \$3.50.



## CHERRIES

Plant Cherries commercially for profit. They are easily grown and prices for the fruit are always high. They produce large crops comparatively early and are not affected by many diseases or pests. Write for more information about Cherries.

**Bing.** Good dark red sweet. Best shipper.  
**Black Tartarian.** Well-known commercial sweet.  
**Early Richmond.** Best known sour.  
**GOVERNOR WOOD.** Most popular wax variety.  
**Lambert.** Favorite dark purple sweet.



Large Montmorency

**Large Montmorency.** Best large red sour.  
**Napoleon.** New wax variety. Yellow, red cheek.  
**Windsor.** Large, sweet, almost black, fine quality.

### STANDARD VARIETIES

	Each	Doz.	100	1,000
2-3 ft. ....	\$.65	\$6.50	\$45.00	\$350
3-4 ft. ....	.85	8.50	60.00	450
4-6 ft. ....	1.00	10.00	75.00	550
6-7 ft., 3 yr. ....	1.50	15.00	95.00	

### NEW VARIETIES

**Greenwood.** Largest Cherry grown. Dark purple. Small seed, sweet.  
**Seneca.** The earliest large, dark purplish Sweet Cherry known. Has excellent quality and great promise.

	Each	Doz.	100	1,000
2-3 ft. ....	\$.85	\$8.50	\$65.00	
3-4 ft. ....	1.00	10.00	75.00	
4-6 ft. ....	1.25	12.50	85.00	
6-7 ft., 3 yr. ....	2.00	20.00		

**SWEET SEPTEMBER.** (U. S. Plant Patent No. 94.) The Amazing New Fall Bearing Cherry. Produces deliciously sweet, bright red Cherries, which ripen from about September 1st until the snow flies. Bears young; heavy crops. 2 yr. 5-6 ft., \$2.25 each, \$22.50 per doz.

## PEARS

Pears will continue to be scarce and sell for good prices as few have been planted within the past twenty years. Plant now for both home use and market.

**Bartlett.** Well known. Most popular Summer Pear. Ripens August.  
**Cayuga.** Improved Seckel.  
**Clapp's Favorite.** A young and early bearer. Very good quality.  
**Garber.** Rapid grower, good quality. Splendid where assortment is demanded. September.  
**Gorham.** Improved Bartlett, ripening two weeks later.  
**Kieffer.** The most extensively planted Pear. Quality not as good as some, but one of our best canners.  
**Seckel.** Small, sweet, excellent quality. Fine for pickling, canning, or eating from the hand.

	Each	Doz.	100	1,000
2-3 ft. ....	\$.65	\$6.50	\$45.00	\$350
3-4 ft. ....	.85	8.50	60.00	450
4-6 ft. ....	1.00	10.00	75.00	550
6-7 ft. ....	1.50	15.00		

## PLUMS, APRICOTS, and NECTARINES

Require little space and are often planted in orchards between Apple Trees. We consider the following the most desirable varieties:

**Abundance.** Lemon yellow overspread with red. Vigorous; abundant bearer. August.  
**Burbank.** Red. Early bearer. August.  
**Damson.** Well known, prolific variety. September.  
**German Prune.** Large, long, oval, purple Plum. Popular for canning and preserving.  
**Green Gage.** An old favorite. Should be in every home orchard.  
**Italian Prune.** Dark wine color. Well known.  
**Red June.** Early, red Japanese Plum.  
**Wickson.** Large, deep maroon-red.  
**Superb Apricot.** Hardy Russian Strain. Regular bearer.  
**Sure-Crop Nectarine.** Hardy and productive. Fruit bright red with pleasant flavor.

	Each	Doz.	100	1,000
2-3 ft. ....	\$.65	\$6.50	\$45.00	\$350
3-4 ft. ....	.85	8.50	60.00	450
4-6 ft. ....	1.00	10.00	75.00	550

### FIGS

**Brown Turkey and Celestial.** 2-3 ft., \$1.00 each, \$10.00 per doz.

### QUINCES

A very popular fruit which is seldom found on the market, but always in demand. We offer the Orange and Champion, the two most popular varieties.

Same sizes and prices as Plums.

**QUINCE, JAPANESE.** A dwarf, shrub-like bush not growing more than 8 feet in height. Golden-yellow, highly flavored, aromatic fruit, which makes most delicious jelly and marmalade. Often bears the first season after being transplanted. 2-3 ft. size, \$1.00 each, \$10.00 per dozen.

**Mulberry, Russian.** 4-6 ft., \$1.50 each.

## JAPANESE PERSIMMONS

This delicious fruit can be grown where Peach and Plum thrive and should be more extensively cultivated. We offer the Tane-Nashi, which is seedless, large, and of the best quality. 4-5 ft., \$1.75 each, \$17.50 per dozen.

## GRAPES

Grapes require little space and attention. Surely you have a place for a few. The collection we offer will furnish Grapes from the earliest to the latest.

**Brighton.** One of the most popular reds. Excellent quality.

**Moore's Early.** Best early blue.

**Concord.** Most popular blue.

**Delaware.** Red. Late. Good keeper.

**White Niagara.** Large perfect bunch. Mid-season.

**Catawba.** Red. Excellent wine Grape.

GRAPES	Each	Doz.	100	1,000
1 yr. vines...	\$.35	\$3.50	\$20.00	\$160.00
2 yr. vines...	.45	4.50	25.00	200.00

### NEW VARIETIES

**Caco.** New variety; considered the best red.

**Champagne.** New, exceedingly hardy, disease resistant, prolific Grape. Amber colored. Deserves a place in your garden.

**Fredonia.** New, early blue.

**Jumbo.** Late black Grape. Large as a Damson. Good quality.

**Lucille.** New, large red Grape, unsurpassed in quality.

**Ontario.** Promising, new, white, early Grape.

**Portland.** Excellent, new, early white Grape.

**Sheridan.** A new Black Grape destined to rival Concord.

**Worden.** Large black Grape. Ripens five to ten days earlier than Concord.

	Each	Doz.	100	1,000
1 yr. vines.....	\$.45	\$4.50	\$25.00	
2 yr. vines.....	.65	6.50	35.00	

### SCUPPERNONG

A southern variety with a delicious, musky flavor. Bronze colored flesh. 2 yr., \$1.00 each, \$10.00 per dozen.

## SMALL FRUITS

Some growers are making more money from five acres of Small Fruits than others are from one hundred acres of general farming. Only a very limited space is required for growing Berries for home use.

### RASPBERRIES

**CHIEF.** Red. Sport of the famous Latham, ten days earlier.

**Cumberland.** Best purple.

**Cuthbert.** Well known red.

**LATHAM.** Brilliant red; mosaic-free. Heavy bearer.

**Logan.** A new blackcap highly resistant to mosaic and other diseases.

**St. Regis.** Best Everbearing. Red. \$1.25 per 25; \$3.85 per 100; \$30.00 per 1,000

### BLACKBERRIES DEWBERRIES YOUNGBERRIES & BOYSENBERRIES

**Blowers.** Hardy, prolific Blackberry. Large. Good shipper.

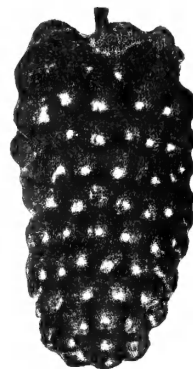
**Eldorado.** Large, juicy, excellent flavor. Most popular commercial Blackberry.

**Lucretia Dewberry.** Very prolific, large and sweet; equal in size to the largest Blackberry. Succeeds everywhere.

**Blackberry and Dewberry.** \$1.50 per 25, \$4.50 per 100, \$35.00 per 1,000.

**New Thornless Youngberry.** New hybrid fruit resembling Dewberry. A cross between Dewberry and Loganberry. Thornless, 20c each, \$1.75 per doz., \$3.00 per 25, \$6.50 per 100, \$50.00 per 1,000.

**New Wonder Boysenberry.** A cross between Blackberry, Raspberry and Loganberry. Berries average 1 1/2 in. in length, producing as much as 6 1/2 tons of fruit per acre. 20c each, \$1.75 per doz., \$3.00 per 25, \$6.50 per 100, \$50.00 per 1,000.



Boysenberry The Sensational New Fruit

### BLUEBERRIES

2 yr., \$1.50 each, 3 for \$4.00, \$15.00 per doz.

### GOOSEBERRIES

**Houghton.** Most popular red.

**Downing.** Large. Improved white. 35c each, \$3.50 per doz., \$20.00 per 100

### CURRENTS

**Red Cross.** Large. Most popular red.

**Wilder's.** Early red. Medium size. 35c each, \$3.50 per doz., \$20.00 per 100

NOTE: Gooseberries and Currants sold in Virginia only in the eastern part of the State; not sold in quantities of less than 6.

## NUT TREES

**Black Walnuts.** Easily grown, profitable for nuts as well as timber. Our nursery grown trees are easily transplanted and will prove profitable. 3-4 ft., 85c each, \$8.50 per doz., \$60.00 per 100; 4-6 ft., \$1.25 each, \$12.50 per doz., \$75.00 per 100; 6-8 ft., \$2.00 each, \$20.00 per doz., \$125.00 per 100; 8-10 ft., \$3.00 each, \$30.00 per doz.

**Black Walnut, Thomas Improved.** 3-4 ft. \$2.25 each, \$24.00 per doz.

**Japanese Walnuts.** 4-6 ft., \$1.50 each, \$15.00 per doz.; 6-8 ft., \$2.00 each, \$20.00 per doz.; 8-10 ft., \$3.00 each, \$30.00 per doz.

**English Walnuts.** These nuts promise to become a profitable commercial crop in Virginia and adjoining states. The trees thrive and the fruit is of as good quality as that produced elsewhere. We offer the Virginia Thin Shell. 18-24 in., \$1.00 each, \$10.00 per doz.; 2-3 ft., \$1.50 each, \$15.00 per doz.; 3-4 ft., \$2.00 each.

**Blight Resistant Chinese Chestnuts.** 2-3 ft., \$1.50 each, \$15.00 per doz.

**Filbert.** (Hazelnut). 3-4 ft., \$1.50 each.

## PECANS

**Large.** Paper shell. Bears young, makes good yield. 2-3 ft., \$1.50 each; \$15.00 per doz.; 3-4 ft., \$2.00 each, \$20.00 per doz.; 4-5 ft., \$2.75 each.

## STRAWBERRIES

There is more variation in the price of Strawberry plants than most Nursery Stock. Why is it? There is a reason. Some dig plants from old bearing patches and sell the plants as a by-product. They must necessarily be sold at a low price as the more experienced planters will not use such plants. Hence such growers must find customers who buy where the cheapest plants are to be had, regardless of whether they are old or new. We agree to furnish at half list price plants for replacing any plants which may be lost the first season from causes beyond our control.

Varieties are listed in ripening order, so you may make a selection ripening from the earliest to the latest.

**FAIRFAX—A New Sensation.** Early, prolific, unusually productive, large and firm. Introduced by U. S. Department of Agriculture.

**DORSETT.** Another U. S. Department of Agriculture introduction. Early, productive, frost resistant, large, firm. One of the most promising new varieties.

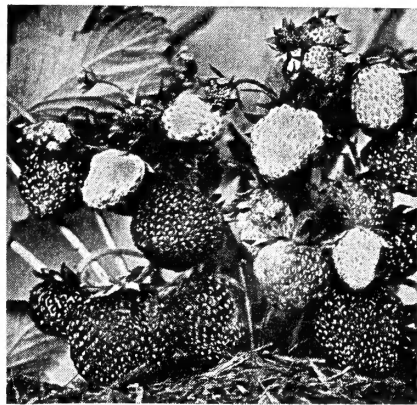
**Klondyke.** An old favorite. Early, sweet. **Premier.** The most popular commercial variety. Good size, excellent quality.

**Blakemore.** Recommended by Department of Agriculture as an outstanding new variety. Supersedes Premier in yield and quality.

**Aroma.** Well known Midseason variety.

**Big Joe.** Extra large. Midseason.

\$2.00 per 100, \$3.50 per 250, \$5.00 per 500, \$7.00 per 1,000, \$30.00 per 5,000.



**Gem Everbearing**

**Gem Everbearing.** Starts fruiting in May, after being transplanted in April. As large as the Mastodon and much more prolific. The ideal home Berry. Per 50, \$1.75; per 100, \$3.00; per 250, \$6.00; per 500, \$9.00; per 1,000, \$15.00.

**MAJESTIC. A Startling Patented New Strawberry.** Bears more quarts per acre, excels in quality, and naturally yields greater returns. Berries are extremely large, rich bright red in color, and firm enough to make it a good long distance shipper. It has a high flavor and is sweeter than the Premier. **Same price as Gem.**

## RHUBARB HORSE RADISH SAGE AND MINT

**Victoria Rhubarb.** Immense, long stalks. Cherry-red color. 25c each, \$2.50 per doz., \$15.00 per 100.

**Horse Radish.** Vigorous grower. Large size roots. 25c each, \$2.50 per doz., \$15.00 per 100.

**Sage.** An improved new variety. 25c each, \$2.50 per doz.

**Double Strength Peppermint.** One of the most popular Herbs. 25c each, \$2.50 per doz.

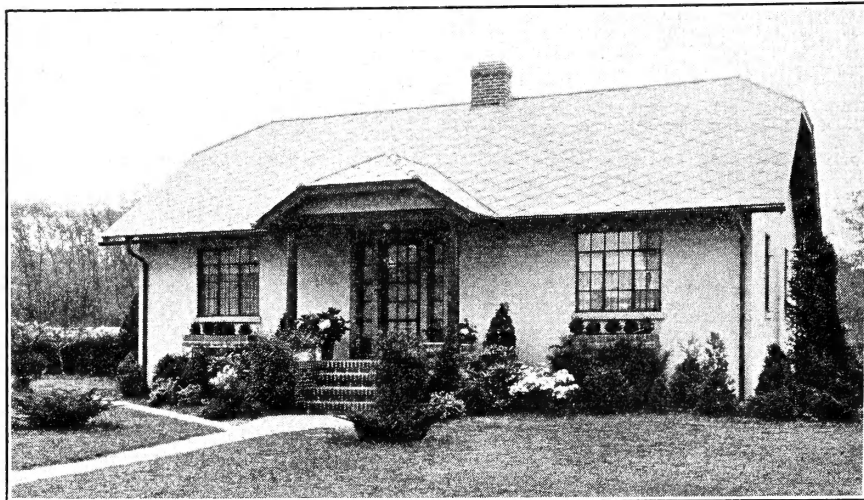
## ASPARAGUS

**Pedigreed Washington.** There are a lot of different varieties. Some nurserymen list as many as half a dozen, but the Pedigreed Washington has been proven far superior to the old varieties, so why plant the others? We list only the Pedigreed Washington.

1 yr., field grown roots: 75c per doz., \$2.50 per 100, \$12.00 per 1,000.

2 yr., field grown roots: \$1.00 per doz., \$3.50 per 100, \$15.00 per 1,000.

## ORNAMENTAL and LANDSCAPE DEPARTMENT



**A Plain House Planted Makes an Attractive Home.**

From our list of choice Shrubs, Evergreens, Shade Trees, Roses, Tuberous Plants, and Perennials, a selection can be made suitable for any requirement.

**Landscape Service.** We employ a professional landscape architect and a number of practical, well trained field men whose services are always available for our customers. If we can be of any service to you, do not hesitate to call on us. Our standard grade of stock is grown chiefly

for the larger landscape developments and is not to be compared to light Mail Order Grades often quoted. Even the smaller stock we list as "Mail Order Grade" is well rooted, branched, and much of it will give immediate effect.

Make use of our Landscape Department. We have established it for your benefit and it is at your command. If too far away for one of our landscape men to see you, send in measurements of your grounds and a photo of the house for suggestions.

## DECIDUOUS SHRUBS

All Shrubs quoted at 35c each will be furnished at \$25.00 per 100; all 50c Shrubs at \$35.00 per 100; all 75c Shrubs at \$60.00 per 100, except as noted. Ask for special prices on larger quantities.

**ABELIA.** Evergreen; grows 4-6 ft. tall. Pink blossoms all Summer. Mail Order Size, 60c each; 18-24 in., 75c each, \$7.50 per doz.; 2-3 ft., \$1.00 each; \$10.00 per doz.; 3-4 ft., \$1.50 each, \$15.00 per doz.

**Almond, Flowering.** Dwarf shrub. Pink or white. Blossoms in March. 2-3 ft., 85c each, \$8.50 per doz.

**Althea (Rose-of Sharon).** Single and Double Oldtime favorite shrub. Pink, white, purple, or red. Mail Order Size, 35c each; 2-3 ft., 50c each, \$5.00 per doz.; 3-4 ft., 85c each, \$8.50 per doz.

**Althea coelestis.** New sky blue single. 2-3 ft., 75c each \$7.50 per doz.

**Aralia, Five-Leaved.** Useful for covering rocky slopes. 6-8 ft., \$2.00 each.

**BARBERRY, NEW RED.** Same as the Thunbergi, except that the foliage is a deep blood red. Mail Order Size 12-15 in., 35c each, \$3.50 per doz.; 15-18 in., 50c each, \$5.00 per doz., \$30.00 per 100; 18-24 in., 65c each, \$6.50 per doz., \$45.00 per 100.

**Barberry thunbergi.** 3 yr. 15-18 in., 30c each, \$3.00 per doz., \$20.00 per 100; 4 yr. 18-24 in., 50c each, \$5.00 per doz., \$30.00 per 100; 4 yr. 2-3 ft., 65c each, \$6.50 per doz., \$45.00 per 100.

**Beautybush (Kolkwitzia).** A new shrub from China. Long, arching branches covered in the Spring with clusters of small, tubular, pink flowers. One of the most popular new shrubs recently introduced. 18-24 in., 75c each, \$7.50 per doz.; 2-3 ft., \$1.00 each, \$10.00 per doz.

**Bush Honeysuckle, fragrantissima, morrowi, tatarica rosea, tatarica rubra.** Pink, white or red flowers that appear with the first robin. Mail Order Size, 35c each; 2-3 ft., 50c each, \$5.00 per doz.; 3-4 ft., 75c each, \$7.50 per doz. Morrowi 5-6 ft., specimens \$2.00 each.

**Butterfly Bush (Azure Fairy).** Lilac-purple. A new hardy Butterfly Bush. 2-3 ft., 75c each, \$7.50 per doz.; 3-4 ft., \$1.00 each.

**Butterfly Bush (Charming).** The New Pink Butterfly Bush, which is a valuable addition to the other new varieties recently introduced. 2 yr., \$1.00 each.

**Butterfly Bush (Dubonnet).** A new reddish purple. 2 yr., 75c each, \$7.50 per doz.

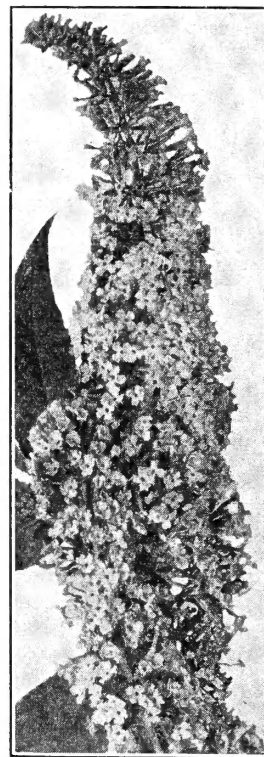
**Butterfly Bush (Hartwegi).** New, valuable cut flower variety. Bright lavender flowers. 2 yr., 75c each, \$7.50 per doz.

**Butterfly Bush (Ile de France).** New dark purple. See catalogue for more complete description. 2 yr., 75c each, \$7.50 per doz.

**Butterfly Bush (Magnifica).** Purple blooms resembling Lilacs. Blossoms first season. Excellent as cut flower. Very fragrant. Blooms from June to November. Mail Order Size, 35c each; 2 yr. 50c each, \$5.00 per doz.

**Chinese Beautyberry (Callicarpa purpurea).** Graceful, dwarf shrub. White flowers during July and August followed by purple berries. 2-3 ft., 75c each, \$7.50 per doz.

**Clethra alnifolia (Sweet Pepper Bush).** Fragrant white flowers in August and September. 18-24 in., 60c each, \$6.00 per doz.



**Ile de France  
A New Rosy Purple  
Butterfly Bush**

**Coralberry.** Dwarf shrub. Covered with coral-red berries in late Fall and early Winter. 2-3 ft., 50c each, \$5.00 per doz.

**Coralberry, chenaulti.** New hybrid, improved. Grows 3-4 ft. Covered with coral-red berries which hang on until mid-winter. 2-3 ft., 50c each, \$5.00 per doz.; 3-4 ft., 75c each, \$7.50 per doz.

**Cotoneaster acutifolia.** A low growing shrub noted for its jet black berries which hang on throughout the Winter. 3-4 ft., \$1.00 each, \$10.00 per doz.





**Crapemyrtle**

**Crapemyrtle.** A favorite shrub in the South. Blooms during July, August and September, when few Shrubs are in blossom. Mail Order Size, 75c each; 2-3 ft., \$1.00 each, \$10.00 per doz.; 3-4 ft., B&B., \$3.00 each; 4-5 ft., B&B., \$5.00 each; 5-6 ft., B&B., \$7.50 each; 6-7 ft. Specimens, B&B., \$12.50 each.

**Desmodium.** Abundant, small lavender blossoms in September and October. 3 yr., 50c each; \$5.00 per doz.

**Deutzia, crenata, fortunei, Pride of Rochester.** Mail Order Size, 35c each; 2-3 ft., 50c each, \$5.00 per doz.; 3-4 ft., 75c each, \$7.50 per doz.

**Deutzia, Mont Rose.** Rose. Dwarf. 12-15 in., 50c each, \$5.00 per doz.

**Dogwood, Golden Stem.** Dwarfish plant, golden twigs, white blossoms and white berries. 2-3 ft., 75c each, \$7.50 per doz.; 3-4 ft., \$1.00 each.

**Dogwood, Pinkflowering.** A valuable distinctive shrub. 18-24 in., \$1.50 each, \$15.00 per doz.; 2-3 ft., \$2.00 each, \$20.00 per doz.; 3-4 ft., B&B., \$3.50 each; 4-5 ft., B&B., \$4.50 each; 5-6 ft., B&B., \$6.00 each.

**Dogwood, Red Stem.** Bright red twigs, creamy white flowers and white berries. Very showy. 3-4 ft., \$1.00 each, \$10.00 per doz.; 2-3 ft., 75c each, \$7.50 per doz.

**Dogwood, Whiteflowering.** Beautiful, broad white blossoms in Spring. 2-3 ft., 75c each, \$7.50 per doz., \$60.00 per 100; 3-4 ft., \$1.00 each, \$10.00 per doz., \$80.00 per 100; 4-6 ft., \$1.75 each, \$17.50 per doz.; 6-7 ft., B&B., \$4.50 each; 7-8 ft., B&B., \$6.00 each.

NOTE: Larger sizes of both Pink and White Dogwood quoted on request.

NOTE: Use Rho-Za-Grow on Dogwood.

**Doubleflowering Peach.** Pink, red, or white. Resembles peach blossoms, but double. Mail Order Size, 60c each; 3-4 ft., 85c each, \$8.50 per doz.; 4-6 ft., \$1.25 each, \$12.50 per doz.

**Euonymus alatus (Winged Burningbush).** Dwarfish upright shrub with chocolate-colored flowers followed by red berries. 3-4 ft., \$1.00 each; 6-7 ft. B&B. Specimens, \$4.50 each.

**Forsythia.** We offer fortunei, intermedia, spectabilis, suspensa, and viridissima. Drooping, yellow, bell-shaped flowers in early Spring. Effective in clumps and as a hedge. Mail Order Size, 35c each; 2-3 ft., 50c each, \$5.00 per doz.; 3-4 ft., 75c each, \$7.50 per doz.; 4-5 ft., \$1.25 each.

**Hawthorn (Crataegus)**  
**Crataegus coccinea** (Thicket Hawthorn). Large white flowers; red fruits in Fall. 3-4 ft., \$2.00 each; 4-5 ft., \$2.50 each.

**Crataegus cordata** (Washington Hawthorn). Single white flowers; red fruits. 5-6 ft., B&B., \$3.50 each; 6-8 ft., B&B., \$4.50 each.

**Crataegus crusgalli** (Cockspur Hawthorn). Deep green shiny leaves; white flowers. 3-4 ft., \$2.00 each; 4-5 ft., \$2.50 each.

**Crataegus pauli** (Paul's Scarlet Hawthorn). Double, scarlet flowers. 6-8 ft., B&B., \$4.50 each.

**Hydrangea, French.** Blue in sour soils; pink in sweet soils. 2 yr., 85c each, \$8.50 per doz.

**Hydrangea, Hills of Snow.** 18-24 in., 50c each, \$5.00 per doz.; 2-3 ft., 75c each, \$7.50 per doz.

**Hydrangea paniculata grandiflora.** Mail Order Size, 35c each; 18-24 in., 50c each, \$5.00 per doz.; 2-3 ft., 75c each, \$7.50 per doz.

**Hypericum aureum.** Low growing Shrub affording masses of yellow blossoms during July and August. 3 yr., 75c each.

**Ibota Privet.** Grayish green foliage and snowy white flowers in June. Bluish berries in Winter. 18-24 in., 40c each, \$4.00 per doz. 5-6 ft. specimens, B&B., \$3.50 each.

**Japanese Bloodleaf Maple.** Blood red foliage in Spring and Summer; dark purple in Fall. A very effective, small tree. 2-3 ft., \$4.00 each.

**Japanese Cutleaf Maple.** Similar to the Bloodleaf Maple except that the foliage is red only in the early Spring. 2-3 ft., \$1.50 each.

**Japanese Flowering Quince.** Lovely red flowers in April. Also produces fruit which makes delicious jellies and marmalade when mixed with Apples. 18-24 in., 75c each, \$7.50 per doz.; 2-3 ft., \$1.00 each, \$10.00 per doz.; 3-4 ft., \$1.50 each, \$15.00 per doz.

**Jersey Tea.** Very attractive dwarf native Shrub. White flowers. 18-24 in., 75c each, \$7.50 per dozen.

**Kerria japonica.** A mass of golden yellow flowers in Spring. Twigs remain green during Winter. 18-24 in., 75c each, \$7.50 per doz.

**Ligustrum amurense.** Evergreen shrub with fragrant white flowers in June. 3-4 ft., 50c each, \$5.00 per doz.

**LILAC, NAMED VARIETIES:**

**Belle de Nancy.** Double. Pink.

**Charles Joly.** Double reddish purple.

**Charles Sargent.** Double. Violet-blue.

**Hungarian.** Violet-purple flowers.

**Ludwig Spaeth.** Single blue.

**Marie Legraye.** Single white.

**Michael Buchner.** Dwarf double light blue.

**Mme. Lemoine.** Double lilac-rose.

**Mrs. Grevy.** Double blue.

**Rubra de Marley.** Single reddish purple.

Mail Order Size, 60c each; 18-24 in., 75c each, \$7.50 per doz.; 2-3 ft., \$1.00 each, \$10.00 per doz.

**Lilac, Purple and White.** Mail Order Size, 45c each; 2-3 ft., 60c each, \$6.00 per doz.

**Mockorange, coronarius.** Creamy white. Very fragrant blossoms. Mail Order Size, 35c each; 2-3 ft., 50c each, \$5.00 doz.; 3-4 ft., 75c each, \$7.50 doz.; 4-5 ft., \$1.00 each, \$10.00 doz.

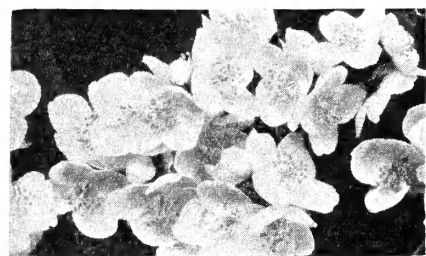
**Mockorange, virginalis.** Fragrant, semi-double flowers through most of Summer. 2-3 ft., 60c each, \$6.50 per doz.; 3-4 ft., 85c each, \$8.50 per doz.; 4-5 ft., \$1.00 each.

**Pearl Bush.** Dazzling white flowers in May. 2-3 ft., 50c each, \$5.00 per doz.; 3-4 ft., 75c each, \$7.50 per doz.; 4-5 ft., \$1.00 each.

**Prunus pissardi.** Blood red foliage throughout the Summer. Mail Order Size, 75c each; 3-4 ft., \$1.00 each, \$10.00 per doz.

**Purple Fringe, Smoke Bush.** 2-3 ft., \$1.00 each, \$10.00 per doz.; 3-4 ft., \$1.50 each.

**Pussy Willow.** Large shrub, useful in border or as specimens. 3-4 ft., 50c each, \$5.00 per doz.; 4-6 ft., 75c each, \$7.50 per doz.



**Mockorange, virginalis**

**Redbud (Judas Tree).** 2-3 ft., 50c each, \$5.00 per doz.; 3-4 ft., 75c each, \$7.50 per doz.; 4-6 ft., \$1.20 each, \$12.00 per doz.

**Regal Privet.** Weeping shrub. Attractive foliage. 2-3 ft., 75c each, \$7.50 per doz.

**Rhodotypos (Jetbead).** Graceful shrub with white Spring flowers, followed by bunches of glistening black berries, which remain through the Summer and Winter. 3-4 ft., 75c each, \$7.50 per doz.

**Rosemary Willow.** Silvery foliage. 18-24 in., 50c each, \$5.00 per doz.; 2-3 ft., 75c each, \$7.50 per doz.

**Snowball, Common.** 18-24 in., 60c each, \$6.00 per doz.; 2-3 ft., 85c each, \$8.50 per doz.

**Snowball, Japanese.** 18-24 in., 60c each, \$6.00 per doz.; 2-3 ft., 85c each, \$8.50 per doz.

**Snowberry.** Mail Order Size, 35c each; 2-3 ft., 50c each, \$5.00 per doz.; 3-4 ft., 75c each, \$7.50 per doz.

**Spiraea, anthony waterer.** Dwarf pink flowering shrub. Blooms all Summer. Mail Order Size, 35c each; 12-15 in., 50c each, \$5.00 per doz.; 15-18 in., 75c each, \$7.50 per doz.; 18-24 in., \$1.00 each, \$10.00 per doz.

**Spiraea billardi.** Medium height. Pink and white. Mail Order Size, 35c each; 2-3 ft., 50c each, \$5.00 per doz.; 3-4 ft., 75c each, \$7.50 per doz.

**Spiraea, Blue.** Dwarf, perennial-like shrub. Blue flowers. 2 yr., 50c each, \$5.00 per doz.

**Spiraea froebell.** Medium grower. Pink blossoms throughout the Summer. 18-24 in., 50c each, \$5.00 per doz.; 2-3 ft., 75c each, \$7.50 per doz.

**Spiraea, Golden.** White flowers in early Spring, golden foliage. 2-3 ft., 50c each, \$5.00 per doz.; 3-4 ft., 75c each, \$7.50 per doz.

**Spiraea, Korean.** A handsome new introduction resembling Spiraea vanhouttei but flowers are larger. 2-3 ft., 75c each, \$7.50 per doz.; 3-4 ft., \$1.00 each, \$10.00 per doz.

**Spiraea thunbergi (Japanese Spiraea).** Dwarf habit, earliest blooming Spiraea; white flowers. 18-24 in., 75c each, \$7.50 per doz.; 2-3 ft., \$1.00 each, \$10.00 per doz.

**Spiraea vanhouttei.** Most popular of all the Spireas. Mail Order Size, 25c each; 2-3 ft., 40c each, \$4.00 per doz.; 3-4 ft., 60c each, \$6.00 per doz.

**Strawberry Bush (Euonymus americana).** Red berries in the fall after the leaves drop. 18-24 in., 50c each.

**Sweet Shrub (Calycanthus).** Very fragrant, chocolate brown blossoms in early Spring. 2-3 ft., 60c each, \$6.00 per doz.; 3-4 ft., 85c each, \$8.50 per doz.

**Tamarix africana.** Pink flowers; light, feathery foliage. Mail Order Size, 35c each; 2-3 ft., 50c each, \$5.00 per doz.; 3-4 ft., 75c each, \$7.50 per doz.; 4-5 ft., \$1.00 each, \$10.00 per doz.

**Viburnum Burkwoodi.** The most promising new Shrub introduced in recent years. Pink blossoms. 18-24 in., B&B., \$2.50 each.

**Vitex agnus macrophylla.** New, improved Vitex. Beautiful blue spikes. 2-3 ft., 75c each, \$7.50 per doz.; 3-4 ft., \$1.00 each.

**Vitex incisa.** Lavender flowers borne on slender branches. 2-3 ft., 50c each, \$5.00 per doz.; 3-4 ft., 75c each, \$7.50 per doz.; 4-5 ft., \$1.00 each, \$10.00 per doz.

**Weigela, Eva Rathke.** Most popular, dwarf, red. Mail Order Size, 45c each; 18-24 in., 75c each, \$7.50 per doz.; 2-3 ft., \$1.00 each, \$10.00 per doz.

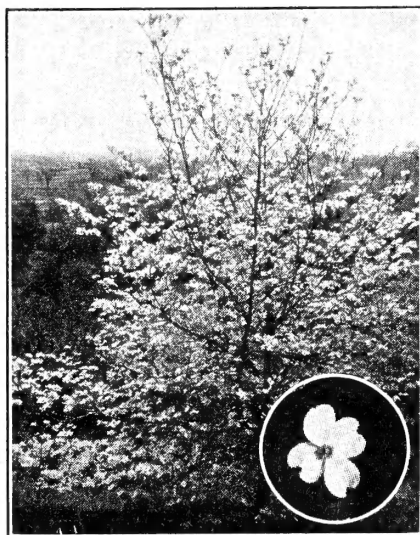
**Weigela floribunda.** New red. 2-3 ft., 75c each, \$7.50 per doz.

**Weigela rosea.** Pink. Mail Order Size, 35c each; 2-3 ft., 50c each, \$5.00 per doz.; 3-4 ft., 75c each, \$7.50 per doz.

**White Fringe.** Large, showy shrub with big, shiny leaves and lacelike white flowers. 2-3 ft., \$1.00 each, \$10.00 per doz.; 3-4 ft., \$1.50 each; 4-5 ft., \$2.00 each.

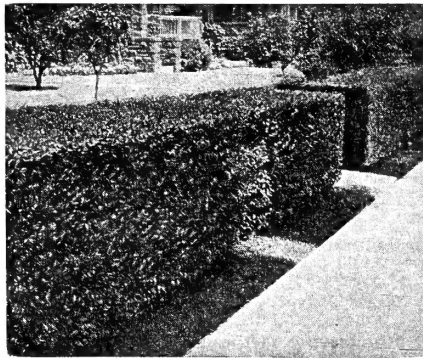
**Winterberry.** One of the most beautiful red berried Shrubs grown. Must be planted in groups of two or more. 2-3 ft., \$1.00 each, \$10.00 per doz.; 3-4 ft., \$1.50 each.

**Winter Jasmine.** Almost an evergreen. Offers a profusion of yellow blossoms during warm Winter days. 3 yr., \$1.00 each, \$10.00 per doz.; 4 yr., heavy clumps, \$1.50 each.



**Dogwood**

## PRIVET HEDGE



Amur River, The New Evergreen Type Hedge

A Privet hedge is much cheaper than a fence and is far more attractive. It not only serves the purpose of a fence, but is decidedly more ornamental. Plant in a straight row six inches apart. Cut back to within three inches of the ground when transplanting and you will have a dense, compact hedge within a short time.

### AMUR RIVER PRIVET (Evergreen)

New evergreen, Southern type. Makes a very dense, compact hedge, resembling Boxwood. It holds its foliage throughout the average winter.

	100	1,000
12-15 in., branched.....	\$5.00	\$45.00
15-18 in., branched.....	6.50	60.00
18-24 in., well branched....	8.00	75.00

**Amur River Privet, North.** Used farther North than the Amur River, South, is hardy. 2-3 ft., \$15.00 per 100.

### CALIFORNIA PRIVET

The most extensively planted Privet hedge. Too well known to need description.

Same sizes and prices as Amur River, except that we offer the 2-3 ft. at \$10.00 per 100, \$90.00 per 1000.

## EVERGREENS

We take pride in our Evergreens and our method of preparing them for our customers. We shear carefully to make them uniform, compact specimens. In preparing for shipment, we dig the plants leaving about the roots the soil in which they were grown, binding it firmly with burlap and heavy cord—disturbing the roots as little as possible.

Ask for quotations on other sizes of Evergreens.

### ARBORVITAE

#### American Types

**American.** One of the best known, tall-growing Evergreens. 4-5 ft., \$4.50; 5-6 ft., \$6.00; 6-7 ft., \$7.50; 7-8 ft., \$10.00; 8-10 ft., \$12.50; 10-12 ft., \$17.50.

**Columbia.** Compact, pyramidal Evergreen. Light green, silvery foliage. 6-7 ft., \$6.00; 7-8 ft., \$8.00.

**Compact.** Dwarf, dense. Ideal for beds, borders and cemeteries. 18-24 in., \$2.50; 24-30 in., \$3.00; 30-36 in., \$3.75; 36-42 in., \$4.50.

**Globe.** Dwarf. Excellent for foundation planting. 12 in., \$1.50; 18 in., \$2.75; 24 in., \$3.50; 30 in., \$5.00.

**Golden, or George Peabody.** Same sizes and prices as American Arborvitae.

**Golden-tipped.** Pyramidal grower; branches golden-tipped. 2-3 ft., \$2.50; 3-4 ft., \$3.25; 4-5 ft., \$4.00.

**Pyramidal.** Tall, columnar and compact. 15 in., Mail Order Size, \$1.25; 18-24 in., \$2.00; 2-3 ft., \$2.75; 3-4 ft., \$3.75.

**Siberian.** Low-growing. 18-24 in., \$2.25; 2-3 ft., \$2.75; 4-5 ft., \$4.50.

**Vervaeae.** Dwarf, compact, pyramidal. Very hardy. Suitable for foundation planting. 18-24 in., \$2.25; 2-3 ft., \$3.00.

#### Oriental Types

**Bereckman's Golden.** Dwarf, compact golden. 12-15 in., \$2.00; 15-18 in., \$2.50.

**Compact.** Compact, semi-dwarf, suitable for foundation plantings. 5-6 ft., \$5.50; 6-7 ft., \$7.50.

**Golden.** Resembles Oriental Golden Pyramidal, but is more spreading. Same sizes and prices as Arborvitae, Oriental Compact.

**Golden Pyramidal.** Compact, golden pyramidal. Same sizes and prices as Arborvitae, Oriental Compact.

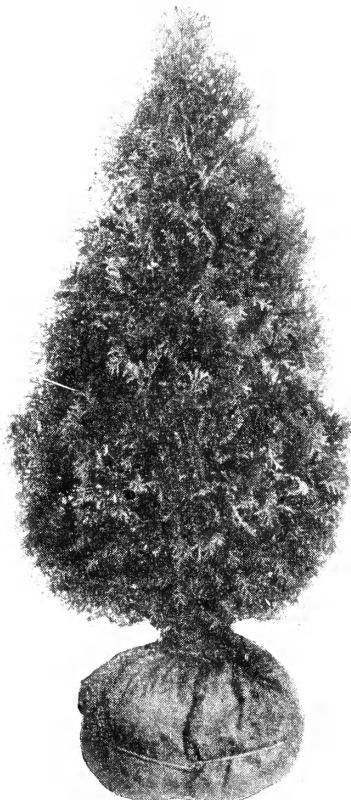
**Goldspire.** Compact, columnar Evergreen with excellent golden foliage. Same sizes and prices as Arborvitae, Oriental Compact.

**Oriental.** Resembles the American Arborvitae, but makes quicker growth. 5-6 ft., \$4.50; 6-7 ft., \$6.00; 7-8 ft., \$8.00.

**Spiralis.** Upright spiral growth. 4-5 ft., \$4.00; 5-6 ft., \$5.00.

**CEDRUS DEODARA.** 8-10 ft., \$12.50; 10-12 ft., \$17.50; 12-15 ft., \$30.00.

**CEDAR OF LEBANON (Cedrus libani).** A fast growing, pyramidal evergreen tree which holds its dark green color throughout the Winter. Especially suited east of Blue Ridge and near Seacoast farther North. 5-6 ft., \$4.75; 6-7 ft., \$6.50; 7-8 ft., \$8.00; 8-10 ft., \$10.00; 10-12 ft., \$12.50; 12-14 ft., \$17.50.



Pyramidal Arborvitae

**Cryptomeria japonica.** A popular Japanese Evergreen. Tall pyramidal type. Rapid grower. 7-8 ft., \$8.00.

**Fir, Balsam.** 3-4 ft., \$3.75; 4-5 ft., \$4.75; 5-6 ft., \$6.50; 6-8 ft., \$8.50; 8-10 ft., \$12.00; 10-12 ft., \$17.50.

**Fir, Douglas.** 8-10 ft., \$12.00; 10-12 ft., \$17.50.

**Fir, Silver.** A more compact, more uniform tree than the Blue Spruce. Its soft, silvery-blue needles give a charming effect as a specimen or when grouped with other Conifers. 2-3 ft., \$4.50; 3-4 ft., \$6.00; 4-5 ft., \$8.00; 5-6 ft., \$12.00; 6-7 ft., \$16.50; 7-8 ft., \$20.00.

**Hemlock, Canadian.** Tall growing. 18-24 in., \$2.00; 2-3 ft., \$2.75; 3-4 ft., \$3.75; 4-5 ft., \$4.75; 5-6 ft., \$6.50. Use Rho-Za-Grow.

**Juniper, Andora.** Prostrate. Beautiful bronze color during Winter. 18-24 in., \$2.25; 2-3 ft., \$3.00; 3-4 ft., \$4.00; 4-5 ft., \$5.50.

**Juniper, Canadian.** Semi-Prostrate. 3-4 ft., \$4.00; 4-5 ft., \$6.00.

**Juniper, Canadian Golden.** Prostrate. 4-5 ft., \$6.00.

**Juniper columnaris.** 7-8 ft., \$10.00.

**Juniper, English.** Silvery green. Pyramidal type. 6-7 ft., \$7.50.

**Juniper, Gray Carpet (J. douglasi).** Excellent trailing variety. Silvery green foliage. 3-4 ft., \$3.75.

**Juniper, Greek.** Grayish green foliage. Low growing. 18-24 in., \$2.50.

**Juniper, horizontalis.** Prostrate, trailing. Green foliage. Excellent for rock gardens. Same size and price as Juniper, Gray Carpet.

**Juniper, Irish.** Bluish pyramidal. 18-24 in., \$2.00; 2-3 ft., \$2.75; 3-4 ft., \$4.00; 7-8 ft., \$10.00; 8-10 ft., \$12.50.

**Juniper, meyeri.** Bluest of the Blue Junipers. Dwarf, 2-3 ft., \$4.00.

**Juniper, Pfitzer's.** Low growing. 15-18 in., \$2.00; 18-24 in., \$2.75; 2-3 ft., \$3.50; 4-5 ft., \$10.00; 5-6 ft., \$15.00.

**Juniper, savin.** 18-24 in., \$2.25; 2-3 ft., \$3.00; 4-5 ft., \$7.50; 5-6 ft., \$10.00.

**Juniper, virginiana glauca.** Pyramidal type. Silver foliage. 3-4 ft., \$5.50; 4-5 ft., \$7.50.

**Pine Mugho.** Very dwarf variety. 30-36 in., \$4.50; 36-42 in., \$6.00; 42-48 in., \$10.00.

**Pine, Scotch.** A beautiful specimen evergreen. 8-10 ft., \$10.00; 10-12 ft., \$15.00.

**Pine, White.** Fast growing. Silvery foliage. 3-4 ft., \$3.50; 9-10 ft., \$14.00; 10-12 ft., \$17.50.

**Retinospora filifera.** Threadlike Cypress. 4-5 ft., \$5.00.

**Retinospora obtusa cripisi.** Golden dwarf. 15-18 in., \$2.50.

**Retinospora pisifera.** Fast growing, medium height. 6-8 ft., \$7.50; 8-10 ft., \$10.00; 10-12 ft., \$15.00.

**Retinospora Pisifera Aurea.** Smooth, golden green foliage. Fast growing. Same sizes and prices as Retinospora pisifera.

**Retinospora plumosa (Plume-like Cypress).** 18-24 in., \$1.75; 2-3 ft., \$2.50; 6-8 ft., \$7.50.

(EVERGREENS—Continued Page 7.)

### PLANT AN EVERGREEN HEDGE

Which requires less shearing than Privet and will cause your garden to stand out as being different from the average planting. We quote the following Special Hedge Prices on Evergreens:

**Norway Spruce.** 4-5 ft., \$275.00 per 100.

**Hemlock.** 18-24 in., \$135.00 per 100; 2-3 ft., \$185.00 per 100.

**Boxwood, Sempervirens** 9-12 in., \$42.50 per 100.

### Save Your Evergreens

**With Dog Repellent.** Keeps the dog away. A harmless, unoffensive dust which the pup will not tolerate. Eight ounce can, a season's supply for a small planting, 75c Postpaid.



Globe Arborvitae



(EVERGREENS—Continued.)

**Spruce, Colorado Blue.** 18-24 in., \$3.75; 5-6 ft., \$12.50.  
**Spruce, Koster's Blue.** 2-3 ft., \$9.00; 3-4 ft., \$14.00.

**SPRUCE, NORWAY.** 3-4 ft., \$3.00; 4-5 ft., \$4.00; 5-6 ft., \$5.00; 6-7 ft., \$6.50; 7-8 ft., \$8.50; 8-10 ft., \$12.00; 10-12 ft., \$17.50.

NOTE: Larger sizes of Norway Spruce quoted on request.

**Spruce, White.** 2-3 ft., \$2.25; 3-4 ft., \$3.00; 4-5 ft., \$4.50; 5-6 ft., \$6.00; 6-7 ft., \$8.00; 7-8 ft., \$11.00; 8-10 ft., \$15.00.

**Yew, Hick's.** Upright. Very compact. Dark green. 15-18 in., \$3.00; 18-24 in., \$4.00; 2-3 ft., \$5.50.

**Yew, Irish.** Rare. Compact, columnar type. Slow grower. 2-3 ft., \$6.00; 3-4 ft., \$8.00.

**Yew, Japanese Dwarf.** Excellent where a dwarf, hardy Evergreen is required. 12-15 in., \$3.00; 15-18 in., \$4.50.

**Yew, Japanese Spreading.** Used with the upright form where a low-growing plant is required. 15-18 in. spread, \$2.50; 18-24 in. spread, \$3.50; 2-3 ft. spread, \$4.50.

**Yew, Japanese Upright Pyramidal.** One of the best Evergreens for foundation plantings and formal gardens. 15-18 in., \$2.50; 18-24 in., \$3.50; 2-3 ft., \$5.00; 3-4 ft., \$7.50; 4-5 ft. Specimens, \$12.00.



Japanese Yew

**HOLLY, AMERICAN (Ilex opaca).**

Selected berry-bearing specimens. 3-4 ft., \$6.00; 4-5 ft., \$8.00; 5-6 ft., \$10.00; 6-7 ft., \$14.00; 7-8 ft., \$18.00.

Good specimens of above sizes, non-fruiting plants, 33 1/3% less than above prices.

Plants not old enough to fruit. 2-3 ft., \$3.50; 3-4 ft., \$4.50.

Use Rho-Za-Grow.

**Holly, Chinese (Ilex cornuta).** 2-3 ft., \$4.50.

**Holly, English (Ilex aquifolium).** 2-3 ft., \$4.50.

**Holly, Japanese (Ilex crenata).** Small leaf Holly. 18-24 in., \$2.75; 2-3 ft., \$3.75.

**Holly, Yaupon (Ilex vomitoria).** 3-4 ft., \$4.50.

**Hypericum moserianum.** New, dwarf, evergreen Hypericum. Excellent for the rock garden. Large yellow blossoms all Summer. 5 yr. clumps, B&B., \$1.50.

**Ligustrum japonicum.** Somewhat resembles Ligustrum lucidum but is a faster, more upright grower and less hardy. 4-5 ft., \$2.50.

**LIGUSTRUM LUCIDUM (Glossy Privet).**

This is the dwarf, low-growing, wax-leaf type, suitable for foundation planting. 18-24 in., \$2.00; 2-3 ft., \$2.75; 3-4 ft., \$3.50; 4-5 ft., \$4.50.

**Lonicera nitida.** 15-18 in., \$1.50; 18-24 in., \$2.00; 2-3 ft., \$2.50.

**Magnolia glauca.** Resembles Magnolia grandiflora; small leaves; white, fragrant blossoms. 5-6 ft., \$4.00; 6-7 ft., \$6.00.

**Magnolia grandiflora.** 8-10 ft., \$20.00; 10-11 ft., \$30.00.

**Mahonia aquifolia.** 18-24 in., \$1.50; 2-3 ft., \$2.50; 4-5 ft. specimens, \$5.00.

**Mountain Laurel (Kalmia latifolia).** 18-24 in., \$2.50; 2-3 ft., \$3.00. Use Rho-Za-Grow.

**Nandina domestica.** 12-15 in., \$1.25; 15-18 in., \$1.75; 18-24 in., \$2.25.

**Photinia serrulata.** White flowers followed by red berries. 2-3 ft., \$2.75; 3-4 ft., \$3.75.

**Pomegranate.** Small glossy green foliage, resembling Holly, but deciduous in Virginia. 18-24 in., \$1.75; 2-3 ft., \$2.50.

**Pyracantha angustifolia.** Low growing. Orange-colored berries. 18-24 in., \$2.50; 2-3 ft., \$3.00.

**Pyracantha Rogersi.** Orange-colored berries. Resembles the Pyracantha lalandi, but is a decidedly more attractive, uniform, shapely Shrub. 18-24 in., \$2.50; 2-3 ft., \$3.00.

**Pyracantha yunnanensis.** Strong grower. Glossy, green foliage. Bright red berries. 18-24 in., \$2.50; 2-3 ft., \$3.00; 4-5 ft., specimens, \$7.50; 5-6 ft. specimens, \$10.00.

**Rhododendron catawbiense and maximum.** 18-24 in., \$2.25; 2-3 ft., \$3.00; 3-4 ft., \$4.50. Use Rho-Za-Grow.

**Rhododendron Hybrids.** Rose, White and Pink. 18-24 in., \$4.50; 24-30 in., \$6.00. Use Rho-Za-Grow.

**Scotch Broom.** Yellow flowers in May. 4 yr. clumps, \$1.50; 6 yr. clumps, \$2.50.

**BROAD-LEAVED EVERGREENS**

This class of Evergreens is being more extensively used from year to year. The glossy green foliage is attractive throughout the year and many of the varieties offer a double attraction at some seasons with a display of bloom and berries. We especially refer you to Azalea, Boxwood, Cotoneaster, Holly, Ligustrum, Mahonia, Nandina, Pyracantha, and Rhododendron.

See instructions for using Rho-Za-Grow.

**AZALEA, DWARF:**

**Amoena**—Evergreen. Purplish red.  
**Hinodegiri**—Evergreen. Bright red.  
**Ledifolia alba**—Large, pure white.  
**Macrantha**—Evergreen. Pink. Late bloomer. 8-10 in., \$1.50 each, \$15.00 per doz.; 10-12 in., \$2.00 each, \$22.00 per doz.; 12-15 in., \$2.50 each, \$25.00 per doz.  
 Use Rho-Za-Grow.

**Azalea (Flame or calendulacea).** A most brilliant yellow, orange, or red flowering shrub. 18-24 in., \$1.75; 2-3 ft., \$2.25; 3-4 ft., \$3.00. Use Rho-Za-Grow.

**Barberry julianiae.** Upright grower. Glossy green foliage, which hangs on all winter. 15-18 in., \$1.50.

**Boxwood, Japanese.** 18-24 in., \$2.75; 24-30 in., \$3.75; 30-36 in., \$5.00.



Boxwood are always effective and useful in landscape plantings.

**BOXWOOD, SEMPERVIRENS**

**LARGE GROWING TYPE**

	Each	Doz.	100
4-6 in., 3 yr. transplants.	.20	\$ 2.00	\$12.00
6-8 in., 4 yr. transplants.	.35	3.50	18.00
8-10 in., 5 yr. transplants.	.45	4.50	25.00
10-12 in., 6 yr. transplants.	.65	6.50	45.00
18-24 in., sheared, balled.	2.75	30.00	225.00
24-30 in., sheared, balled.	3.75	40.00	300.00
30-36 in., sheared, balled.	5.00	55.00	400.00
36-42 in., sheared, balled.	7.50	80.00	650.00
42-45 in., sheared, balled.	12.00	125.00	

Other sizes quoted on request.

**BOXWOOD SUFFRUTICOSA**

**Dwarf Type—Slow Growing**

	Each	Doz.	100
4-6 in., 2 yr. from beds.	.25	\$ 2.50	\$12.00
4-6 in., 4 yr. transplants.	.35	3.50	18.00
6-8 in., 5 yr. transplants.	.45	4.50	25.00
8-10 in., 6 yr. transplants.	.65	6.50	45.00
10-12 in., spec., balled...	1.75	20.00	160.00
12-15 in., spec., balled...	2.75	30.00	225.00
15-18 in., spec., balled...	4.00	44.00	325.00
18-21 in., spec., balled	7.50		

We offer in addition to the above Dwarf Boxwood some very fine specimens in various sizes and as much as 50 years old. Quoted on request.

**Cotoneaster microphylla.** Spreading Shrub. Long leaves, dark green above, silvery beneath. White flowers; red fruit. 18-24 in., \$2.50.

**Elaeagnus (Russian Olive).** Silvery-green foliage. Fragrant blossoms, late Fall. 2-3 ft., \$2.75; 3-4 ft., \$3.50.

**English Laurel.** Large, glossy evergreen foliage. Good foundation plant. 18-24 in., \$1.75.

**Euonymus compacta.** Compact, pyramidal type. 15-18 in., \$1.00; 18-24 in., \$1.50; 2-3 ft., \$2.00.

**Euonymus japonica variegata.** Like green form, except leaves are silver variegated. 15-18 in., \$1.00; 18-24 in., \$1.50; 2-3 ft., \$2.00.

**EUONYMUS PATENS.** Best Euonymus grown. Creamy white flower, red berries. 18-24 in., \$1.75.

**Evergreen Viburnum (Viburnum rhytidophyllum).** 18-24 in., \$2.00.

**Heather, Scotch.** Dwarf Evergreen suitable for the rockery. Purple flowers. Midseason. 12-15 in., \$1.25; 15-18 in., \$1.75.



Rhododendron



# SHADE TREES

NOTE—Write for prices on larger sizes of Shade Trees.

**Apple Trees.** Ornamental as well as fruitful. Desirable where small shade trees are required. 7-8 ft. bearing size specimens, \$1.50 each, \$15.00 per doz.

**Ash, American White.** Well-known popular shade tree. Excellent for campuses. 8-10 ft., \$2.25 each, \$22.50 per doz., \$125.00 per 100; 10-12 ft., \$2.75 each, \$27.50 per doz., \$160.00 per 100; 2-2½ in. caliper, \$4.00 each; 2½-3 in. caliper, \$6.00 each.

**Ash, European Mountain.** Small tree; noted for its orange-red berries. 5-6 ft., \$2.00 each, \$20.00 per doz.; 6-8 ft., \$2.75 each; \$27.50 per doz.

**Beech, American.** 2½-3 in. caliper, B&B., \$15.00 each; 3-4 in. caliper, B&B., \$22.50 each; 4-5 in. caliper, B&B., \$30.00 each.

**Beech, Purple.** 2-3 ft., B&B, \$7.50 each; 3-4 ft., B&B., \$10.00 each.

**Birch, Cutleaved Weeping.** Graceful weeping. White bark. 5-6 ft., \$2.50 each; 6-8 ft., \$3.50 each; 20-25 ft. specimens quoted on request.

**Birch, White.** Slender; white bark. 6-8 ft., \$2.25 each; 8-10 ft., \$3.00 each; 10-12 ft., \$4.00 each. Large specimens quoted on request.

**Buckthorn.** Glossy foliage, black berries. 8-10 ft., \$3.50 each.

**Catalpa bungei.** Small, umbrella-like tree. 4-5 ft., \$2.50 each, \$25.00 per doz.; 5-6 ft., \$3.00 each, \$30.00 per doz.

**Catalpa speciosa.** 6-8 ft., \$1.50 each.

**Elm, American.** Famous old shade tree; conspicuous as a street tree in Washington and New England cities. 6-8 ft., \$2.00 each, \$20.00 per doz., \$125.00 per 100; 8-10 ft., \$2.50 each, \$25.00 per doz., \$145.00 per 100; 10-12 ft., \$3.00 each, \$30.00 per doz., \$200.00 per 100; 2-2½ in. caliper, \$4.00 each; 2½-3 in. caliper, \$6.00 each; 3-3½ in. caliper, \$10.00 each.

## CHINESE ELM

A rapid grower, with slender, almost wiry branches. It is one of the first trees to leaf out in the Spring, and the last to shed its foliage in the Fall. Throughout the long season the leaves remain a beautiful green and are remarkably free from the usual plant diseases and insect injuries so common in many of the other Elms.

	Each	Doz.
5-6 ft.....	\$ 1.50	\$15 00
6-8 ft.....	\$ 2.00	\$20 00
8-10 ft.....	2 50	25 00
10-12 ft.....	3.50	35.00

Write for prices on specimens up to 8 in. caliper.

**Elm, English.** Retains its foliage later than the American Elm. Somewhat resembles the Oak. 8-10 ft., \$3.00 each; 10-12 ft., \$3.75 each.



Chinese Elm

**Flowering Crabs.** Very ornamental dwarf. Spring flowering trees in following varieties. Eli, Hopa, Japanese, Sargent, Virginia Sweet. 3-4 ft., \$1.00 each, \$10.00 per doz.; 4-6 ft., \$1.50 each, \$15.00 per doz.; 6-7 ft., \$2.50 each; 7-8 ft. specimens, B&B., \$7.50 each.

**Franklinia.** A new tree demanding much attention. 3-4 ft., B&B., \$4.50 each.

**Ginkgo (Maidenhair Tree).** 6-7 ft., \$3.00 each.

**Golden Chain Tree (Laburum).** 6-7 ft., \$3.00 each.

**Gum, Sour.** 6-8 ft., \$3.00 each; 8-10 ft., \$4.50 each. For B&B., add 50%.

**Gum, Sweet.** 4-6 ft., \$2.00 each, \$20.00 per doz.; 6-8 ft., \$3.00 each, \$30.00 per doz.; 8-10 ft., B&B., \$6.00 each. 4-5 in. caliper specimens, write for quotations.

**Halesia (Great Silver Bell).** A small tree with drooping silver bells in early Spring. 4-5 ft., \$1.50 each; 5-6 ft., \$2.00 each.

**Honey Locust.** 3-4 ft., \$1.00 each; 4-6 ft., \$1.50 each.

**Horse Chestnut.** 8-10 ft., \$4.00 each.

**Japanese Flowering Cherry.** 3-4 ft.; \$2.00 each, \$20.00 per doz.; 4-5 ft., \$2.50 each, \$25.00 per doz.; 7-8 ft., B&B., \$10.00 each.

**Japanese Weeping Flowering Cherry.** 5-6 ft., \$4.50 each.

**Kentucky Coffee Tree.** 3-4 ft., \$1.50 each; 4-5 ft., \$2.00 each; 5-6 ft., \$2.50 each.

**Koelreuteria (Goldenrain Tree).** Native of China. Clusters of lemon yellow flowers in Midsummer. 6-8 ft., \$2.50 each; 8-10 ft., \$3.50 each.

**Larch, European.** 12-15 ft., \$10.00 each; B&B., \$15.00; 15-18 ft., B&B., \$20.00.

**Linden, American.** 6-8 ft., \$3.00 each, \$30.00 per doz.; 2½-3 in. caliper, \$10.00 each.

**Linden, European Little Leaf.** 4-6 ft., \$2.50. 6-8 ft., \$3.75 each.

**Locust, Black.** 10-12 ft., \$4.00.

**Magnolia soulangeana.** Purplish red tulip-like flowers which appear early in Spring before the foliage. 18-24 in., \$2.50 each; 2-3 ft., \$3.75 each.

**MAPLE, NORWAY.** One of the most popular Shade Trees, due to being adapted to almost all soils and climates, being especially suited to street planting, as well as on home grounds, and apparently being free from most insects and diseases.

	Each	Doz.	100
6-8 ft.....	\$2.25	\$25.00	
2½ in. caliper....	5.00	50.00	\$375.00
3-3½ in. caliper....	8.00	80.00	
3½-4 in. caliper....	12.50	125.00	
4-5 in. caliper....	18.00		

Larger sizes and B&B. trees quoted on request.

**Maple, Schwedler's.** Resembles Norway except that foliage is blood red in Spring. 10-12 ft., \$4.00 each; 2-2½ in. caliper, \$6.50 each.

**Maple, Silver.** Fastest growing of all Maples. 6-8 ft., \$1.50 each, \$15.00 per doz.; 8-10 ft., \$2.00 each, \$20.00 per doz.; 10-12 ft., \$2.50 each, \$25.00 per doz., 2-2½ in. caliper, \$3.50 each; 2½-3 in. caliper, \$4.50 each; 3-4 in. caliper, \$7.00 each; 4-5 in. caliper, \$10.00 each.

**Maple, Sugar.** Resembles Norway, but grows into a larger tree. Very desirable for streets and campuses. 10-12 ft., \$4.00 each, \$40.00 per doz.; 2-2½ in. caliper, \$6.00 each.

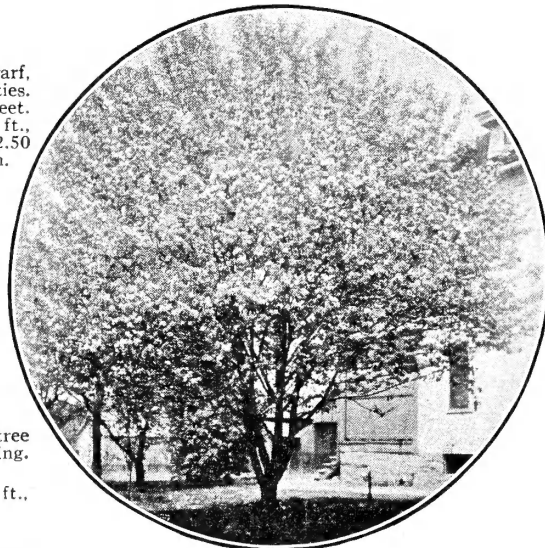
**Mimosa.** Spreading tree. Pink flowers and dark green foliage. 6-8 ft., \$2.75 each; 8-10 ft., \$3.50 each. 2-2½ in. caliper, \$5.00 each.

**Oaks.** Chestnut, Pin, Red and White. 6-8 ft., \$2.75 each, \$27.50 per doz.; 8-10 ft., \$3.50 each, \$36.00 per doz.; 10-12 ft., \$4.50 each.

**Oak, Pin.** 2-2½ in. caliper, \$7.50 each; 2½-3 in. caliper, \$10.00 each; 3-3½ in. caliper, \$12.50 each; 4-5 in. caliper, B&B., quoted on request.

**Oak, Scarlet.** 6-8 ft., \$3.50 each; 8-10 ft., \$4.50 each.

**Plane, American.** Resembles Oriental Plane, but has slightly larger leaves. 6-8 ft., \$2.00 each, \$20.00 per doz.; 10-12 ft., \$3.50 each, \$36.00 per doz.; 2½-3 in. caliper, \$6.00.



Flowering Crab

**Plane, Oriental.** Desirable as street tree. Resists smoke better than any other shade tree. 2-2½ in. caliper, \$4.50 each; 2½-3 in. caliper, \$6.00 each. Larger sizes quoted on request.

**Plane, Oriental.** Headed High. Suited for street planting. 2½-3 in. caliper, \$5.00 each, \$50.00 per doz.

**Poplar, Carolina.** 8-10 ft., \$1.20 each, \$12.00 per doz., \$85.00 per 100; 10-12 ft., \$2.00 each, \$20.00 per doz., \$135.00 per 100; 2-2½ in. caliper, \$3.00 each.

**POPLAR, LOMBARDY.** Tall, slender trees; especially desirable for driveways and backgrounds. 5-6 ft., 65c each, \$6.50 per doz., \$45.00 per 100; 6-8 ft., 80c each, \$8.00 per doz., \$60.00 per 100; 8-10 ft., \$1.25 each, \$12.50 per doz., \$75.00 per 100; 10-12 ft., \$1.50 each, \$15.00 per doz., \$110.00 per 100; 12-15 ft., \$2.50 each, \$25.00 per doz.

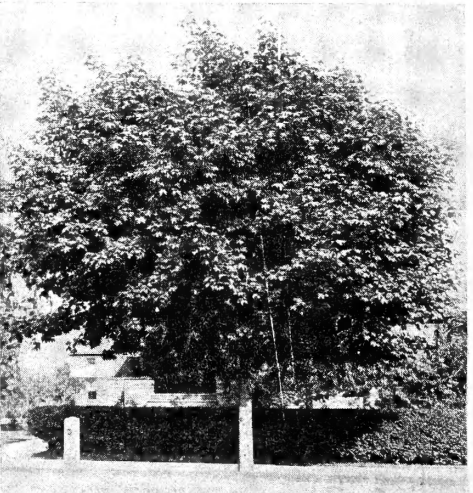
**Poplar, Tulip.** A rapid grower, native American variety. Broad leaf and good spreading form. 5-6 ft., \$1.75 each, \$17.50 per doz.; 6-8 ft., \$2.50 each, \$25.00 per doz.; 8-10 ft., \$3.50 each. Larger B&B. trees quoted on request.

**Sourwood (Oxydendrum arboreum.)** Thick, shiny leaves that turn scarlet in Fall. White flowers in Summer. 5-6 ft., \$2.25 each; B&B, 75c per tree extra; 6-7 ft., \$3.00; B&B., \$1.00 per tree extra.

**Texas Umbrella.** A beautiful, dwarf, umbrella-like tree. Not hardy in all parts of Virginia. 5-6 ft., \$2.00 each.

**Walnut, American Black.** Fast growing, spreading Shade Tree. Profitable for both lumber and nuts. 6-8 ft., \$2.00 each, \$20.00 per doz.; 8-10 ft., \$3.00 each, \$30.00 per doz.

**Willow, Weeping.** Used especially for planting about streams and in low land. 5-6 ft., \$1.00 each, \$10.00 per doz.; 6-8 ft., \$1.50 each, \$15.00 per doz.; 8-10 ft., \$2.50 each.



Norway Maple

# ROSES

## THE IMPERIAL DOZEN

Of the thousands of new varieties on the market we have selected the following twelve for our "Imperial Dozen." Each of these Roses has some outstanding meritorious feature.

- Ami Quinard.** Tall, strong grower. Double flowers of deep velvety crimson.
- Condesa de Sastago.** Cup flowers of fiery copper inside and rich gold on the reverse.
- Editor McFarland.** Clear, brilliant pink. Strong stems for cutting.
- Edith Nellie Perkins.** Shapely, two-toned pink flowers produced in great abundance. Strong grower, prolific bloomer.
- E. G. Hill.** Full double bloom of crimson-scarlet. One of the best.
- Golden Dawn.** Large double flowers of lemon-yellow.
- Joanna Hill.** Pointed buds, deep creamy yellow flowers tinged with salmon and ocre yellow. Long, strong stems.
- Margaret McGredy.** Double, cup-shaped flowers of orange-scarlet, turning to a peculiar shade of carmine-rose.
- Mrs. Jules Bouche.** Long-pointed buds, high-centered flowers of pure white with a slight pink tint at the center at first. An outstanding white Rose.
- Mrs. P. S. DuPont.** Tapering, reddish gold buds and double, golden yellow flowers.
- President Herbert Hoover.** Blend of orange and pink, flamed and suffused with vivid rose-pink.
- Talisman.** A rare combination of shadings of gold, apricot, yellow, and deep pink. Beautiful, long, pointed buds and good stems. 2 yr. No. 1, 85c each, \$8.50 per doz., \$70.00 per 100.



Joanna Hill

## GOLD MEDAL HYBRIDS

- Betty Uprichard.** A blending of salmon pink and carmine, with a coppery sheen and a suffusion of orange.
- Duchess of Wellington.** Intense saffron yellow, tinted with rich crimson. One of the best yellows.
- Etoile de Hollande.** Large crimson flowers with velvety finish and especially fine fragrance.
- Gruss an Teplitz.** A popular double, brilliant red Rose.
- Kaiserin Auguste Viktoria.** Creamy bud and perfect white blossoms tinted lemon-yellow at center. The most popular white Rose.
- Mevrouw G. A. Van Rossem.** Long pointed buds, flowers large and full; color, salmon to apricot on a pink and yellow ground.
- Miss Rowena Thom.** Large rose-pink flower. Vigorous grower.
- Mrs. Chas. Bell.** An exquisite, delicate, shell-pink color.
- Radiance, Pink.** A brilliant rosy carmine. The best garden Rose.
- Radiance, Red.** Bright, even shade of pure red. Size, foliage, growth and habit same as its parent, the Pink Radiance.
- Souvenir de Claudius Pernet.** Superb sun-yellow color shaded warmer in the center.
- Ville de Paris.** Rich, buttercup-yellow. Price: Mail Order Size, 55c each, \$6.00 per doz.; 2 yr. No. 1, 75c each, \$7.50 per doz., \$60.00 per 100.

## CLIMBERS

- American Beauty.** Rich, dark carmine.
- American Pillar.** Brilliant rosy pink, approaching carmine. White center.
- Dr. W. Van Fleet.** Delicate flesh pink on the outer surface, deepening to rosy flesh in center. Strong grower, good foliage.
- Gardenia.** Creamy yellow buds, delicate ivory-white blossoms. Handsome foliage.
- Paul's Scarlet Climber.** Vivid scarlet, semi-double blossoms. Profuse bloomer.

CLIMBERS—Continued Column 2



Dr. W. Van Fleet

## CLIMBERS—Continued

- Primrose.** Handsome, Holly-like foliage. Double soft primrose-yellow blooms.
- Silver Moon.** Clear silvery white with a mass of bright yellow stamens. Vigorous, dark green, glossy foliage. Price: Mail Order Size, 55c each, \$6.00 per doz.; 2 yr. No. 1, 75c each, \$7.50 per doz., \$60.00 per 100.

## NEW DAWN

### New Everblooming Dr. Van Fleet

A patented sport of the Dr. Van Fleet, possessing all the fine qualities of its parent, and is a continuous bloomer. \$1.75 each.

## POLYANTHUS

- The Polyanthus Roses, also known as Baby Rambler or Cluster Roses, are dwarf shrub-like in form and bloom from May until frost.
- Cameo.** Shell-pink and salmon with a glow of gold.
- Lafayette.** Large, semi-double, cherry-crimson.
- Mario Pavie.** Fragrant, waxy white flowers.
- Mrs. R. M. Finch.** Bright rosy pink. One of the finest. Price: Mail Order Size, 55c each, \$6.00 per doz.; 2 yr. No. 1, 75c each, \$7.50 per doz., \$60.00 per 100.



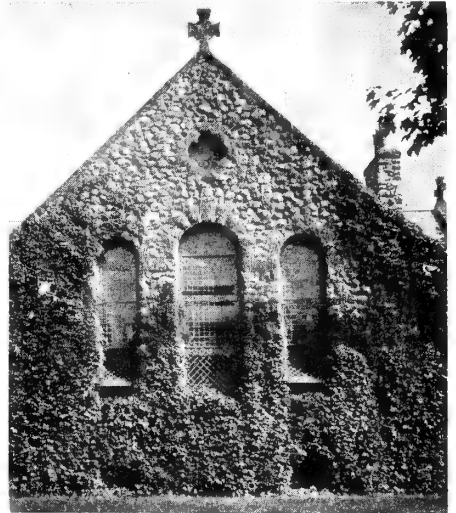
NEW DAWN

## MISCELLANEOUS ROSES

- American Beauty.** A popular Hybrid Perpetual. American Beauty Red.
- Evergreen Gem.** Low-growing, trailing Rose used as a ground cover. Small, double white flowers. Foliage almost evergreen.
- F. K. Druschki.** Snow-white Hybrid Perpetual. Sometimes called the White American Beauty.
- Hugonis.** Early yellow flowers. Used chiefly as a shrub and for borders.
- Max Graf.** Handsome foliage and sprays of large, single pink flowers. Useful for covering exposed banks.
- Rose rugosa.** Hardy, stout, bushy shrub. Single flowers in May and June. Red or White. Price: Mail Order Size, 55c each, \$6.00 per doz.; 2 yr. No. 1, 75c each, \$7.50 per doz., \$60.00 per 100.

# GROUND COVERS

- Bittersweet Evergreen** (*Euonymus radicans*), 2 yr., 50c each, \$5.00 per doz., 3 yr., 75c each, \$7.50 per doz.; 4 yr. B&B., \$1.00 each.
- Honeysuckle, Hall's.** Bedding Size, 25c each, \$2.50 per doz., \$12.00 per 100, \$75.00 per 1000; 3 yr., 50c each, \$5.00 per doz., \$35.00 per 100.
- Japanese Spurge** (*Pachysandra*). \$2.00 per doz., \$15.00 per 100, \$75.00 per 1000.
- Purple Wintercreeper** (*Euonymus coloratus*). 3 yr., 45c each, \$4.50 per doz.; 4 yr., 60c each, \$6.00 per doz.
- Vinca major** (*Periwinkle*). An excellent ground cover. Adapted to both shade and sunlight. Differs from *Vinca minor* by having a larger leaf. Same prices as *Vinca minor*.
- Vinca minor** (*Periwinkle*). Useful as a ground cover. Small blue flowers. Bedding Size Plants, \$2.50 per doz., \$12.00 per 100. Clumps 35c each, \$3.50 per doz., \$20.00 per 100.



Ivy makes an excellent covering for stone, stucco, and brick walls.

## VINES

- Mail Order Size, 30c each, \$3.00 per doz., \$20.00 per 100, except as noted.
- 2 and 3 yr. Standard Grades, 50c each, \$5.00 per doz., \$35.00 per 100, except as noted.
- Akebia.** Dainty, beautiful vine. Purple flowers. May. 3 yr., 75c each, \$7.50 per doz.
- Baltic Ivy.** A small leaved, extremely hardy English Ivy.
- Bittersweet** (*Celastrus scandens*). Popular for its orange colored berries in Winter.
- Boston Ivy.** Most popular climber. Clings to walls.
- Clematis, Large Flowering; Andre** (red); **Duchess of Edinburgh** (white); **Jackman** (purple). 2 yr. only, \$1.00 each, \$10.00 per doz.
- Clematis paniculata grandiflora.** Useful for trellises. Blooms in masses of white in Aug.
- Cutleaf Boston Ivy** (*Ampelopsis Lowii*). Dainty, cutleaf, dwarf vine which will cling to stone or brick. 2 yr., 75c each, \$7.50 per doz.
- Dutchman's Pipe.** Rapid grower. Broad leaves; brownish colored flowers. 2 yr., \$1.00 each.
- English Ivy.** Popular for covering low walls and as a ground cover in low, shady places. Evergreen.
- Goldflame Honeysuckle** (*Lonicera heckrottii*). Large, flame-coral trumpet shaped flowers lined with gold. May until frost. New and rare. 3 yr., 75c each, \$7.50 per doz.
- Kudzu Vine.** Desirable for screens where quick effect is necessary. Broad leaves.
- Pittsburgh Ivy.** Self branching. Resembles English; smaller leaf; more hardy.
- Silver Lace Vine.** Rapid grower. Covered with masses of white flowers throughout Autumn. 2 year only, 75c each, \$7.50 per doz.
- Trumpet Vine** (*Bignonia*). Large, orange scarlet, trumpet shaped flowers.
- Virginia Creeper.** A native climber. Quick grower.
- Wisteria.** Purple flowers. Rapid grower.

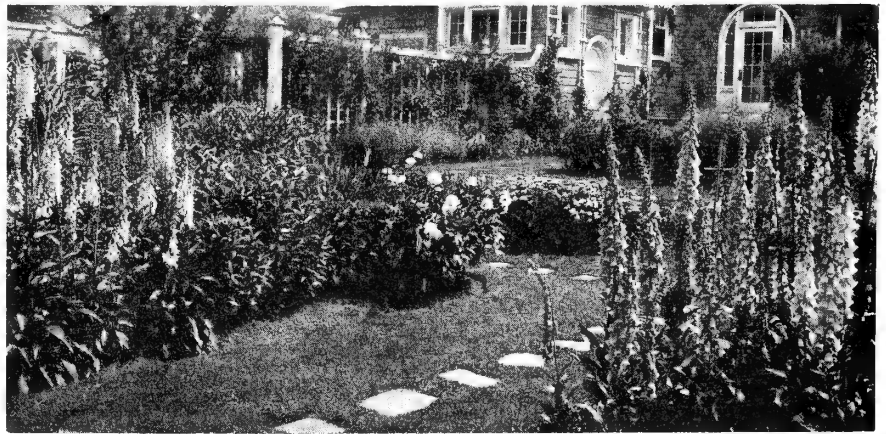
# PERENNIALS

Your garden is not complete without perennial borders and perennial beds. Consult our Landscape Department for help in designing and planting perennial beds.

- \*Indicates varieties suitable for Rock Gardens. 20c each, \$2.00 per doz., \$15.00 per 100, except as noted.
- Achillea (Milfoil).**
- Millefolium kelwayi.** Magenta red. June to September. 40 in.
- \***Ptarmica, The Pearl.** Pure white. All Summer. 2 ft.
- \***Tomentosa aurea.** Yellow. June. 6 in.
- Aegopodium.** Silvery variegated foliage; white flowers. Suitable for borders and shady locations. 12 in.
- \***Ajuga (Bugle).** Purplish-blue. May and June. 6 in.
- Alyssum (Madwort).**
- \***Rostratum.** Light yellow. May to July. 1 ft.
- \***Saxatile compactum.** Bright yellow. Early Spring. 1 ft.
- Anchusa Dropmore.** Blue flowers in May and June. 3 ft.
- Anemone (Windflower).**
- \***Japanese.** Fall blooming. 30c each, \$3.00 per doz.
- Anthemis kelwayi (Hardy Marguerite).** Yellow, daisy-like flowers. July and August. 2 ft.
- Aquilegia (Columbine).** Long Spurred Hybrids.
- Crimson Star.** Crimson center, white petals. June. 18 in.
- \***Mrs. Scott Elliott's Strain.** Mixed colors. June. 18 in.
- \***Arabis alpina (Rockcress).** White and Pink. April and May. 12 in.
- \***Armeria alpina.** Crimson. May and June. 4 in.
- Artemisia, Silver King (Sagebrush).** Silver colored stems and foliage. 30 in.
- Asters, Hardy.** Mixed colors. 1 to 4 ft.

## ASTERS

- Asters.** New, hardy, improved, named varieties. Sept. and Oct., except as noted.
- Barr's Pink.** Pink. 4 ft.
- Beechwood Challenger.** Crimson-red. 3 ft.
- \***Countess of Dudley.** Pink, yellow eye. 9 in.
- Frikarti.** Lavender-blue flowers 2 to 2½ in. across. June until November. New and rare. 2 ft. 45c each, \$4.50 per doz.
- Hybridus luteus.** Golden yellow. Rare and popular. July to September. 2 ft.
- \***Lady Henry Maddocks.** Pink. Dwarf. 1 ft.
- \***Marjorie.** Large, rose pink flowers. Dwarf. 1 ft.
- \***Mauve Cushion.** Silvery mauve. 9 to 10 in.
- \***Nancy.** Light pink. Dwarf. 1 ft.
- \***Ronald.** Lilac-pink. Dwarf. 1 ft.
- Royal Blue.** Rich deep blue. 3 ft.
- Star of Wartburg.** An outstanding new perennial. Lilac flowers. May and June. 45c each, \$4.50 per doz.
- Tartaricus.** Large, bluish violet. 6 ft.
- \***Victor.** Light lavender-blue. Dwarf. 8 in. Price 25c each; \$2.50 per doz., \$20.00 per 100, with exceptions noted.
- \***Aubrietia (Rainbow Rockcress).** Blue. Early Summer. 6 in.
- Baptisia australis (False Indigo).** Indigo blue. Midsummer. 2 to 4 ft.
- Campanula (Bellflower).**
- \***Medium (Canterbury Bells).** Blue, pink and white. June and July. 2 to 4 ft.
- \***Rotundifolia (Blue Bells of Scotland).** Blue. June to August. 1 ft.
- \***Candytuft (Iberis sempervirens).** White. June-July. 12 in.
- Carnations, Hardy.** Pink, red, and yellow. June-July. 2 ft.
- Centurea montana (Perennial Cornflower).** Large violet-blue flowers. July to September. 2 ft.
- \***Cerastium tomentosum (Snow-in-Summer).** Silver foliage, white flowers. May. 6 in.
- \***Cheiranthus allioni (Siberian Wallflower).** Orange. Spring and early Summer. 12 in.
- Chrysanthemum (Hardy Chrysanthemum).** Mixed colors.



The Garden is not Complete Without Perennial Borders

## CHRYSANTHEMUMS, HARDY

### CUSHION MUMS

This popular strain originated from the famous Pink Cushion, which is still extensively grown. Most popular of the Hardy Chrysanthemums because of their long growing season and adaptability to many uses. 12 in.

- \***Bronze Cushion.** Bronze flowers turning to a bronzy, coppery yellow.
  - \***Pink Cushion.** Solid, compact grower. Covered with pink blossoms from August until frost.
  - \***Red Cushion.** Similar habits to the popular Pink Cushion, but later and a clear, dark red.
  - \***White Cushion.** At opening shows a delicate pink, turning pure white as flowers develop.
- Price 25c each, \$2.50 per doz., \$20.00 per 100.

### MISCELLANEOUS STRAINS

- Button Yellow.** Pompon. Small yellow. September.
  - Crimson Beauty.** Pompon. Bright crimson. November.
  - Frances Whittlesey.** Decorative. Rich bronze and garnet. October.
  - Jean Cumming.** Decorative. White. Sept.
  - Little Red Foot.** Button. Red-mahogany around a tight dark center. October.
  - Rose Charm.** Pompon. Bright rose pink. October.
  - Rose Royal.** Aster flowering. Violet. Nov.
  - Vivid.** Decorative. New rosy crimson. September.
  - Wannetka.** Decorative. White. Sept.
  - White Doty.** Pompon. Large, pure white. October.
  - White Victory.** Large flowering. White. October.
  - Yellow Normandie.** Decorative. Yellow. September.
- Price 25c each; \$2.50 per doz., \$20.00 per 100.

### KOREAN HYBRIDS

- Apollo.** Combination of bronze, red, gold and salmon. October.
  - Ceres.** Old-gold, yellow and soft coppery bronze. October.
  - Daphne.** Exquisite blending of Daphne-pink and lilac-rose with golden stamens. October.
  - Ember.** Combination of glowing bronze, coral, and orange shades. October.
  - \***Innocence.** Dwarf white. October.
  - King Midas.** Charming shade of soft yellow. Late September.
  - \***Mars.** Deep red with velvety sheen. Oct.
- Price 25c each, \$2.50 per doz., \$20.00 per 100.

### Dianthus plumarius (Pinks).

- \***Deitoides, Brilliant.** Rose. Summer. 6 in.
- \***Rose Cushion.** New, dwarf, compact. Excellent for rock gardens.
- \***Dicentra eximia (Plumy Bleedingheart).** Continuous bloomer. Pink. Dwarf. 30c each, \$3.00 per doz.
- Dicentraspectabilis (Bleedingheart).** Heart-shaped, rose colored flowers. April or May. 18 in., 30c each, \$3.00 per doz.
- Digitalis (Foxglove).** White and rose. June and July. 3 to 4 ft.
- Doronicum caucasicum.** Large, bright yellow flowers. Early Spring. 2 ft.
- Echinacea purpurea (Coneflower).** Purple flowers with large brown cone-shaped centers. July to October. 3 ft.
- Echinops ritro (Globe Thistle).** Metallic blue flowers, thistle-like foliage. July and August. 3 to 4 ft.
- Eupatorium coelestinum (Hardy Ageratum).** Light purple-blue flowers. August until frost. 18 in.
- \***Euphorbia myrsinites.** Yellow flowers. May and June. 4 to 6 in.
- \***Evening Primrose (Oenothera).** Large yellow flowers. June to August. 6 in.

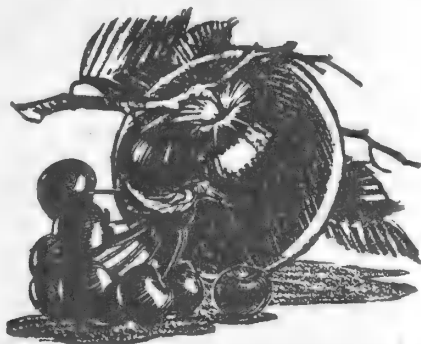
**Fuchsia magellanica.** A new, hardy Fuchsia. Produces masses of ruby-red flowers from early Summer until frost. An outstanding new variety. 35c each, \$3.50 per doz.

### Gaillardia (Blanket Flower).

- Grandiflora.** Orange-red. May to Oct. 2 ft.
  - Sun God.** Large solid yellow. All Summer 2 ft. 45c each, \$4.50 per doz.
  - Golden Glow (Rudbeckia laciniata).** Large double yellow flowers. Late Summer. 6 ft.
  - Gypsophila (Baby's Breath).**
  - Bristol Fairy.** New. Double white flowers all Summer. 45c each, \$4.50 per doz.
  - Paniculata.** White. Early Summer. 40 in.
  - \***Repens.** White. July and August. 6 in.
  - Repens Bodgeri.** New, early pink. 2 ft.
- (PERENNIALS—Continued Page 11.)

# WAYNESBORO NURSERIES, INC. - - - - - WAYNESBORO, VA.

## PLANT FRUIT TREES THIS SPRING While Prices are Low and Grow Your Own Fruit



Home Orchards have been neglected and as a result many farm families are without Fruit. As an additional service to those desiring to plant varieties furnishing Fruit throughout the season, we are recommending the following Home Orchards and Small Fruit Collections.

All Home Orchards and Small Fruit Collections are offered at liberal discounts, as indicated on this sheet, and the net prices shown are subject to no further discounts.

NOTE: When ordering Home Orchards and Small Fruit Collections, merely give the number of the Home Orchard or Small Fruit Collection, such as No. 1, No. 1-A, etc. It is not necessary to mention the varieties.

Unless Collections are offered Prepaid, shipment will be made by Express.

### HOME ORCHARD No. 1—12 Big 3 Yr. 6 to 7 Ft. Apple Trees

Selected so as to furnish fruit throughout the season—Net Sale Price.....\$ 7.20

- 1 **Yellow Transparent**—Golden yellow. Best early.
  - 1 **Maiden Blush**—An old Midsummer favorite.
  - 1 **Smokehouse**—Late Summer home orchard favorite.
  - 2 **Yellow Delicious**—Popular late Fall and Winter variety.
  - 2 **Lowry**—One of best Winter varieties grown.
  - 2 **Delicious**—Well known home and commercial variety.
  - 2 **Turley**—Improved Stayman.
  - 1 **Sweet Paradise**—Best known Winter sweet.
- 12 **Large 3 yr. 6 to 7 ft. Apple Trees—List Price.....\$ 9.00**
- Less 20% Special Discount..... 1.80
- NET COST TO YOU—Packed for shipment.....\$ 7.20**

#### PREMIUM

With order for Home Orchard No. 1 as listed above, received before March 31, 1941, we agree to put in as a premium 4 Elberta Peach Trees 3 to 4 ft.

### HOME ORCHARD No. 1-A—12 Trees— Net Sale Price.....\$3.20

We recommend the 3 Yr. 6 to 7 Ft. Trees in Orchard No. 1 and believe it economy to buy that size. However, we can furnish the varieties of Apple in 1 Yr. 3 to 4 Ft. Trees for.....\$ 4.00  
Less 20% Special Discount..... .80

**NET COST TO YOU—Packed for shipment.....\$ 3.20**

### SMALL FRUIT COLLECTION No. 2—300 Berry Plants—Net Sale Price.....\$9.89

- 25 **New Wonder Boysenberry**—A distinct new variety of Berry.....\$ 3.00
- 25 **Thornless Youngberry**—New hybrid fruit..... 3.00
- 50 **Cumberland Raspberry**—Most popular blackcap Raspberry.. 1.93
- 50 **New U. S. Patented Majestic Strawberry**—Large, excellent quality, prolific..... 1.75
- 50 **Gem Everbearing Strawberry**—The ideal home Berry..... 1.75
- 100 **Blakemore Strawberry**—New, leaf-spot resistant variety.... 2.00

300 **Berry Plants—List Price.....\$13.43**  
Less Special Discount..... 3.54

**NET POSTPAID PRICE ON COLLECTION.....\$ 9.89**

#### PREMIUM

If order for above Collection is received before March 31, 1941, we agree to put in 2 Grape Vines as a premium.



**HOME ORCHARD No. 3—30 Trees—Selected so as to furnish you an assortment throughout the season—Net Sale Price.....\$9.92**

**APPLES**

- 1 **Yellow Transparent**—Golden yellow. Best early.
- 1 **Summer Yellow Delicious**—A Golden Delicious ripening in July.
- 1 **McIntosh**—Red Winter Apple.
- 1 **Lowry**—New, most popular Winter home Apple.
- 2 **New Red Delicious**—A Solid Red Delicious. Well known.
- 2 **York**—Well known Winter Apple.
- 2 **Paragon**—Popular Winter Apple.
- 2 **New Red Stayman**—A Solid Red Stayman. Excellent.

**12 Apple—1 Yr. 3 to 4 Ft. Trees—List price.....\$ 4.00**

**PEACH:—Listed in ripening order.**

- 2 **Mikado**—Yellow. Resembles Elberta, but 30 days earlier.
- 2 **Golden Jubilee**—Large, yellow, freestone of good quality.
- 2 **Vedette**—New yellow freestone resembling Elberta.
- 2 **Elberta**—Yellow freestone. Most popular Peach.
- 2 **Gage Elberta**—Yellow freestone. More hardy than Elberta.
- 2 **Shipper's Late Red**—Yellow freestone resembling Hale. Late August.

**12 Peach—3 to 4 Ft. Medium Trees—List Price.....\$ 3.50**

**CHERRY:**

- 1 **Lambert**—Large, dark, sweet Cherry.
- 1 **Large Montmorency**—Best large, red, sour Cherry for home or market.

**2 Cherry—3 to 4 ft. Trees—List Price.....\$ 1.70**

**PEAR:**

- 1 **Bartlett**—Well known. Ripens August.
- 1 **Seckel**—Small, sweet, excellent quality.

**2 Pear—3 to 4 Ft. Trees—List Price.....\$ 1.70**

- 1 **PRUNE**—Dark purple. Firm, free stone, small seed.—2 to 3 ft. .... .65
- 1 **QUINCE**—Well known, popular. 3 to 4 Ft. .... .85

**Total List Price.....\$12.40**  
**Less 20% Special Discount..... 2.48**

**NET COST TO YOU—Packed for shipment.....\$ 9.92**

**PREMIUM**

On orders for Home Orchard No. 3 received before March 31, 1941, we will put in as a Premium 3 Grape Vines 2 Yr., Value.....\$1.35

**HOME ORCHARD No. 3-A—30 Trees, 3 Yr. 6 to 7 Ft.—Net Sale Price.....\$16.00**

The above Home Orchard can be furnished in 3 Yr. 6 to 7 Ft. Apple and 4 to 6 Ft. Size in other Trees at our list price of.....\$20.00  
 Less Special 20% Discount..... 4.00

**NET COST TO YOU—Packed for shipment.....\$16.00**

**PREMIUM**

On orders for Home Orchard No. 3-A received before March 31, 1941, we will put in as a Premium 6 Grape Vines 2 Yr., Value \$2.25.

**HOME ORCHARD No. 4—25 2 to 3 Ft. Medium Peach Trees, Postpaid, \$5.20 Value, for only.....\$2.89**

- 5 **Golden Jubilee**—Large, yellow, freestone of good quality. July.
- 5 **Belle of Ga.**—Best white canning variety. Early August.
- 5 **Elberta**—Most popular yellow Peach of its season. Mid-August.
- 5 **Gage Elberta**—Improved Elberta; few days later.
- 5 **Shipper's Late Red**—Large, beautiful red. Yellow meat. Late August.

**25 Peach Trees, 2 to 3 Ft. Medium, Postpaid, for only.....\$ 2.89**

**PREMIUM**

With an order for Home Orchard No. 4, as listed above, received before March 31, 1941, we agree to put in as a premium 2 Vedette Peach, a Hardy Canadian variety.

**SMALL FRUIT COLLECTION No. 5—12 Most Popular New Grapes, Postpaid, for only.....\$3.60**

- 2 **Champagne**—(Amber)—New, hardy, prolific Grape.
- 2 **Fredonia**—(Blue)—New, early Grape.
- 2 **Jumbo**—(Black)—Large, late Grape of good quality.
- 2 **Lucelle**—(Red)—A bright red Grape with spicy flavor.
- 2 **Ontario**—(White)—New, early Grape of excellent quality.
- 2 **Portland**—(White)—A new, early variety.

**12 of the finest New Grapes we have ever offered, for only.....\$ 3.60 Postpaid**

**PREMIUM**

If your order for the above Collection is received before March 31, 1941, we will put in 2 Concord Grape Vines as a premium.



**WAYNESBORO NURSERIES, Inc.**

**WAYNESBORO, VIRGINIA**





Spring, 1941

DEAR PLANTER:

The average planter does not have the time or patience to test each known variety to determine those best suited to his requirements, so he must depend chiefly on recommendations made by those who have studied and tested varieties and can give dependable information.

Being favorably located in the Famous Virginia Fruit Belt and growing Fruit Trees by the millions, we are in position to, and do, obtain and supply information valuable to the planter, regardless of whether he is planting a commercial or home orchard.

The 1940 Growing Season in the Shenandoah Valley was good and the Fall ideal for maturing the stock, so we are offering this Spring trees and plants of the highest quality at unusually low prices; in fact many of the items are being offered for less than we can produce them for at present production costs. However, we do not recommend your planting our trees merely because of price. If you require plant material, you should have the best and of course take advantage of any possible saving in price.

PLANT IMPROVED VARIETIES when planting Fruit. See the NEW VARIETIES of Apple and note that the price has been reduced to the same as that of standard varieties. We even offer the U. S. PATENTED YORKING at no advance in cost. Do not overlook the LOWRY, an Apple you will enjoy in the home orchard and profit by in the commercial orchard. We also strongly recommend the Double Red Strains, including YORKING, New Red Delicious, New Red Stayman, New Jonathan, and New Red Rome. Note that New Varieties of Peach are now being offered at standard variety prices. Your special attention is called to the Valiant, Vedette, Hale-Haven, and Gage Elberta.

ORNAMENTAL PLANT MATERIAL is now being offered in a larger assortment of varieties and sizes than ever before. Prices are low.

FOR FURTHER INFORMATION on varieties write for a Free Copy of our 44 Page Planting Guide.

NOTE THE LIBERAL 20% DISCOUNT—From prices already low. Attempting to continue improving quality and service and at the same time reduce prices requires mass production and skill. The automobile manufacturers are accomplishing just that and we are attempting to do so by offering a flat 20% discount from our regular printed price list on all cash orders, packed, f.o.b. our shipping point, or 15% discount where a 25% cash deposit is made with order. Any excess postage remitted for parcel post shipment will be refunded.

Very truly yours,  
WAYNESBORO NURSERIES, INC.

EMQ/W

# WATERBURY'S IMPROVED PLANT MATERIALS

WATERBURY'S

1911

Dear Farmer:

The average planter does not know the difference between the quality of the plants he buys. He is content to buy the cheapest and get the best. He does not know that the quality of the plants he buys is of great importance. Being favorably located in the Eastern States, we are able to obtain and supply the best quality of plants for a commercial or home orchard.

The 1910 growing season in the Eastern States was a failure. The plants were small and the fruit was small. The plants were small and the fruit was small. The plants were small and the fruit was small. The plants were small and the fruit was small.

PLANT MATERIALS. When plants are small, the price has been reduced to the same extent. The price has been reduced to the same extent. The price has been reduced to the same extent. The price has been reduced to the same extent.

ORIGINAL PLANT MATERIALS is now being offered at a lower price than ever before.

FOR FURTHER INFORMATION on varieties and prices, please write to Waterbury's Nurseries, Inc., 1000 Broadway, New York, N. Y. NOTE THE LIBERAL 30% DISCOUNT - From the date of purchase, we will give a 30% discount on all orders for plants, fruit, and other articles. This discount is in addition to the 10% discount on all orders for plants, fruit, and other articles.

Yours truly,  
WATERBURY'S NURSERIES, INC.

(PERENNIALS—Continued)



Hybrid Korean Chrysanthemums—  
Ceres

- Helenium** (Sneezewort). Mixed colors. Late Summer. 3 ft.  
**\*Helianthemum (Rock or Sunrose)**. Mixed colors. July and August. 8 to 12 in.  
**Helianthus (Perennial Sunflower)**.  
**Harvest Moon**. Rich yellow. Sept. 4 ft.  
**Maximiliani**. Golden yellow. October. 6 ft.  
**Heliopsis (Orange Sunflower)**.  
**Pitcheriana**. Yellow. July to August. 3 ft.  
**Scabra excelsa**. Almost double yellow flowers. July to September. 3 ft.  
**Hibiscus** (Mallow Marvels). Mixed. White, pink and red. Midsummer. 4 ft.  
**Hollyhocks**. Mixed colors. Midsummer. 4 to 5 ft.  
**\*Kenilworth Ivy** (*Linaria cymbalaria*). Lavender. Summer. 3 in.  
**Lathyrus** (Perennial Sweet Pea). Mixed colors. June-October. Climbing.  
**Liatris (Gay-feather)**. Purple. July and August. 3 ft.  
**Lily-of-the-Valley** (*Convallaria*). White, fragrant blossoms. May. 6 in.  
**\*Linum perenne** (Flax). Blue. July and August. 12 in.  
**Lychnis** (Campion).  
**Viscaria splendens**. Crimson flowers. June.  
**Lythrum roseum superbum** (Rose Loosestrife). Rose pink. August and Sept. 2 ft.  
**Mertensia virginica (Virginia Bluebells)**. Blue flowers changing to clear pink. Early Spring. 1 ft.  
**\*Nepeta mussini (Ground Ivy)**. Lavender-blue flowers. June and July. 1 ft.  
**Pentstemon torreyi**. Scarlet-red spikes. June, July, and August. 2 ft.

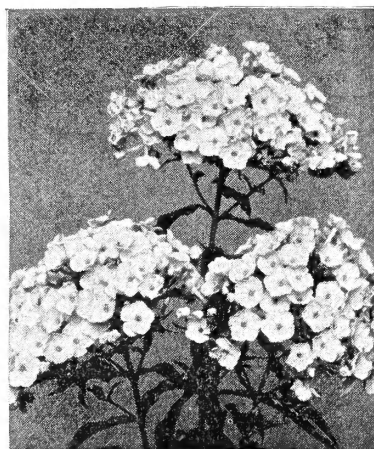
**PHLOX DECUSSATA**

- Phlox, Columbia**. New U.S. Patented Variety. Resistant to mildew, red spider, and other common diseases. Considered the finest Phlox known. Pink. 18 in. Midsummer. 45c each, \$4.50 per doz.  
**Assorted Colors** (Unnamed). Midsummer.  
**Named Varieties**. 25c each, \$2.50 per doz. (See Planting Guide for named varieties.)

**PHLOX SUBULATA—  
NAMED VARIETIES**

- \*Alba**. Moss-like foliage. Sheet of white flowers in April and May.  
**\*Appleblossom**. Appleblossom pink. 30c each, \$3.00 per doz.  
**\*Atrolilacina**. Bright light blue, maroon center. May. 30c each, \$3.00 per doz.  
**\*Atropurpurea**. A new variety with intense red flowers. 30c each, \$3.00 per doz.  
**\*Emerald Cushion**. New, fine deep rose. 30c each, \$3.00 per doz.  
**\*G. F. Wilson**. Starry, lavender flowers. April-May. 30c each, \$3.00 per doz.  
**\*Maculata alpha**. Pink with dark eye. 30c each, \$3.00 per doz.  
**\*Rosea**. Best known, popular pink.  
**\*Vivid**. Bright fiery rose. Dwarf. Compact clumps, 30c each, \$3.00 per doz.

- \*Phlox divaricata**. Dwarf. Fragrant. Lavender. May.  
**Phlox, Native Blue**. Bluish lavender. June and July. 2 ft.  
**\*Phlox subulata**. Pink, lavender and white. April and May. 4 in.  
**Physostegia (False Dragonhead)**. Long spikes delicate pink flowers. July and August. 3 to 4 ft.  
**Virginica, Vivid**. Deep rose. August. 20 in.  
**Platycodon (Balloonflower)**. Blue and White. Summer. 1 to 2 ft.  
**\*Plumbago (Leadwort)**. Blue flowers. Summer and Fall. 6 in.  
**Poppy, Oriental (Papaver Orientale)**. Crimson. May-June. 2 ft.  
**\*Primula (Hardy Primrose)**. Yellow. May. 6 in.  
**Pyrethrum (Painted Daisy)**. Finest Mixed English Varieties. June. 18 in.  
**Salvia (Meadow Sage)**.  
**Azurea**. Sky blue. Aug. and Sept. 3 ft.  
**Turkestanica**. Light pink. July-Sept. 4 ft.  
**Saponaria**.  
**\*Oeymoides splendens**. Pink, trailing. Summer.  
**\*Scutellaria coelestina (Skullcap)**. Blue. July and August. 1 ft.  
**Sedum (Stonecrop)**. (See Planting Guide for named varieties.)  
**\*Sempervivum (Hen and Chickens)**. Rosette-like thick leaves.  
**Shasta Daisy (Chrysanthemum maximum)**. Large white blossoms in June, July and August. 2 ft.  
**\*Stachys lanata (Woundwort)**. Light purple. July. 12 in.  
**Star of Bethlehem (Ornithogalum umbellatum)**. Variegated foliage. White flowers. 1 ft.  
**Stokesia cyanea**. Azure blue. Profuse bloomer. August. 12 to 15 in.  
**Sweet William (Dianthus barbatus)** Mixed colors. May and June. 12 in.  
**\*Thymus serpyllum (Thyme)**. Creeping; purple flowers. June to September. 10 in.  
**Tritoma (Red Hot Poker)**. Long spikes of scarlet flowers. Midsummer. 30 in.  
**\*Tunica saxifraga. (Coatflower)**. Light pink. May. 10 in.  
**Veronica (Speedwell)**.  
**\*Longifolia**. Blue. June to October. 2 ft.  
**\*Rupestris**. Blue. May. 4 in.  
**\*Viola (Tufted Pansies)**. Blue, Yellow, Mixed, and Old English Sweet.  
**Ornamental Grasses**. Fluffy, silvery plumes. 30c per clump, \$3.00 per doz.



**PHLOX COLUMBIA**  
The Most Beautiful Phlox Grown

**ROOTS AND TUBERS—  
CANNAS**

- Sold for Spring Delivery Only.**
- |                                |             |            |
|--------------------------------|-------------|------------|
|                                | <b>Doz.</b> | <b>100</b> |
| A good mixed assortment.....   | \$1.00      | \$ 6.00    |
| Following named varieties..... | 1.50        | 10.00      |
- City of Portland**. Beautiful dwarf pink.  
**Eureka**. Most popular pure white. 3-4 ft.  
**King Humbert. Red**. Bronze foliage.  
**King Humbert. Yellow**. Green foliage.  
**President**. Most popular red.

**GLADIOLUS**

Sold for Spring Delivery Only.

The Gladiolus continues to be one of our most popular cut flowers.

	<b>Doz.</b>	<b>100</b>	<b>1000</b>
Good Mixture.....	\$.50	\$3.75	\$30.00
Named Varieties.....	.65	4.50	35.00

(See Planting Guide for varieties.)



Iris are Easily Grown

**IRIS**

**IMPERIAL DOZEN**

45c each, \$4.50 per doz.

There are several thousand named varieties of Iris, from which we have selected the following twelve as the most popular for general culture. You will be pleased with the Imperial Dozen.

- Coronation**. Deep golden yellow tone. Profuse bloomer.  
**Dolly Madison**. Blended mauve, yellow and lilac. One of the finest.  
**Eleanor Roosevelt**. Rich, dark purple. Fall blooming variety.  
**Frieda Mohr**. Blended lilac-rose. Very fragrant. One of the best.  
**Gold Imperial**. Golden yellow. Free flowering.  
**Indian Chief**. Standards, deep pink; Falls, velvety crimson.  
**King Midas**. Blended golden buff and brown with orange beard.  
**Los Angeles**. Great white flowers faintly edged blue. Tall, vigorous.  
**Midgard**. A yellow and pink blend. Distinctive variety.  
**Pink Satin**. Smooth orchid-pink.  
**Red Dominion**. A pure violet-red.  
**Wm. Mohr**. Orchid veined violet.

**GOLD MEDAL IRIS**

20c each, \$2.00 per doz., \$10.00 per 100

- |                  |                   |
|------------------|-------------------|
| Afterglow        | Mother of Pearl   |
| Albert Victor    | Pallida Dalmatica |
| Ambassadeur      | Princess Beatrice |
| Bridesmaid       | Purple Queen      |
| Candelabre       | Quaker Lady       |
| Crimson King     | Queen of May      |
| Dr. Bernice      | Rhein Nixe        |
| Fairy            | Roseway           |
| Gajus            | Shekinah          |
| Her Majesty      | Sherwin-Wright    |
| L. A. Williamson | Susan Bliss       |
| Lorely           | Windham           |
| Magnifica        | Wyomissing        |
| Mme. Chereau     |                   |

**MISCELLANEOUS IRIS**

15c each, \$1.50 per doz., \$7.50 per 100

- Tall Bearded, Mixed** Siberian, Purple and Japanese, Mixed White  
**Spanish, Mixed**
- LOUISIANA IRIS**. A recently discovered beardless strain. Especially suited for planting near streams and pools. Purple. 45c each, \$4.50 per doz.  
**DWARF IRIS**. Early flowering. Improved varieties. Especially useful for the rock garden and low borders. See Planting Guide for varieties. 45c each, \$4.50 per doz.



# SPRING FLOWERING BULBS, DAHLIAS, PEONIES, AND LILIES



## SPRING FLOWERING BULBS

Sold for Fall Delivery Only.

Spring Flowering Bulbs are difficult to obtain, due to state of war in Europe. So we have to offer only limited quantity as follows:

- CROCUS.** Good mixture. 75c per doz., \$4.50 per 100.  
**DARWIN TULIPS.** Good mixture. 85c per doz., \$6.50 per 100.  
**DARWIN TULIPS.** Named varieties, assorted colors. \$1.00 per doz., \$7.50 per 100.  
**BREEDER TULIPS.** Assorted colors. \$1.00 per doz., \$7.50 per 100.  
**JONQUILS.** \$1.40 per doz., \$9.00 per 100.

### DAFFODILS OR NARCISSUS

\$1.40 per doz., \$9.00 per 100

- Emperor.** Perianth primrose yellow, trumpet darker. Still a fine old variety.  
**Empress.** Cream-white perianth with trace of gold down center of each petal. Deep canary-yellow trumpet.  
**Firebrand.** Fluted cup of fiery red; creamy perianth.  
**King Alfred.** A king among the fine varieties. Rich, lustrous golden yellow throughout.

### DAFFODILS OR NARCISSUS—Continued

- out. Extremely vigorous in habit. Perianth often measures 4 in. across.  
**Mrs. E. H. Krelage** (White King Alfred). One of the best pure whites.  
**Sir Watkin.** Perianth primrose-yellow; large and well formed yellow cup.  
**Yellow Poppy.** An outstanding new pure yellow with tall stems.

## PEONIES

### Imperial Dozen

\$1.25 each, \$12.50 per dozen

- Fuyajo.** Dark, rich, mahogany-red. Single.  
**Jeannot.** Large, globular flowers of flesh-pink tinted lavender. Late.  
**Lady Alexander Duff.** Large, semi-rose type flowers. Soft pink and white. Midseason.  
**Le Cygne.** Very large, early, ivory-white. The highest rated Peony. Early.  
**Martha Bulloch.** Immense, soft, rose-pink. Late.  
**Mme. Jules Dessert.** Delicate flesh-pink shading to creamy white with golden glow at center. Midseason.  
**Mons. J. Elle.** Gigantic pink flower of perfect crown type. Early.  
**Sarah Bernhardt.** Large, semi-rose type. Apple-blossom pink, silver tipped. Late.  
**Solange.** Large, full, compact flower of rose type. Outer petals lilac-white, deepening towards center with a salmon shade. Late.  
**Souv. de Louis Bigot.** Very large, fragrant, rose type flowers of pink with fringed petals of bright bengal-rose. Midseason.  
**Therese.** Considered the world's best pink. Compact rose type developing later a high crown. Midseason.  
**Walter Faxon.** Soft coral-pink shaded lighter at ends of petals and deeper rose-pink at base. Midseason.

### Gold Medal Dozen

75c each, \$7.50 per dozen.

- Auguste Dessert.** Intense velvety carmine with silvery border. Midseason.  
**Baroness Schroeder.** Flesh changing to white, creamy center. Midseason.  
**Duchess de Nemours.** Cup-shaped, sulphur-white flowers. Early.  
**Edulis Superba.** Very fragrant, bright pink. Early.  
**Felix Crousse.** Large, ball-shaped flowers. Rich red.

### GOLD MEDAL DOZEN—Continued

- Festive Maxima.** Enormous, full double, pure white flowers flecked with carmine spots. Early.  
**Karl Rosenfield.** Large, semi-rose type. The best all around red Peony.  
**Mme. Boulanger.** Soft rose bordered silver.  
**Mme. Calot.** Hydrangea-pink, darker toward center. Early.  
**Othello.** Double, purple-crimson.  
**Rose Corna Plena.** Beautiful pink and red-dish variety. Midseason.  
**Rubra Superba.** Carmine or crimson. Large, compact flowers of rose type.  
**PEONIES—Unnamed Varieties in Pink, Red and White.** 45c each, \$4.50 per dozen.

## LILIES

30c each, \$3.00 per doz., except as noted.

- Day Lily (Hemerocallis).**  
**Bay State.** Brilliant deep yellow. 4 ft. Late. June. 45c each, \$4.50 per doz.  
**Dr. Regel.** Rich orange-yellow. 18 in. Very fragrant. May and June.  
**Fulva (Brown Day Lily).** Tall, graceful. Orange-brown blossoms. June. Does well in shade or damp land.  
**J. A. Crawford.** Rich apricot-yellow shaded light cadmium. 4 ft. June and July. 45c each, \$4.50 per doz.  
**Madonna Lily (Candidum).** Pure white. An excellent combination with Regal Lilies. July.  
**Magic Lily (Amaryllis halli).** A hardy and rare Amaryllis. Blended orange and pink. August. \$1.00 each, \$10.00 per doz.  
**Plantain Lily (Funkia).** Sky blue. July.  
**Regal Lily (Regale).** White flowers suffused with pink. Very fragrant. June. Large size bulbs, 30c each, \$3.00 per doz. Medium sized bulbs, \$1.50 per doz., \$10.00 per 100.  
**Rock Lily (Yucca filamentosa).** Creamy white flowers in June and July. 4 to 5 ft., 20c each, \$2.00 per doz.  
**Rock Lily Variegated (Yucca variegata).** Differs from the old variety by having silvery striped foliage.  
**Siberian Flame Lily (Tenuifolium).** Dwarf. Coral-red. June. 20c each, \$2.00 per doz.  
**Tiger Lily (Tigrinum).** Single orange flowers spotted black. August. 20c each, \$2.00 per doz.  
**Umbellatum grandiflorum.** Orange-red. June.

## GARDEN SUPPLIES

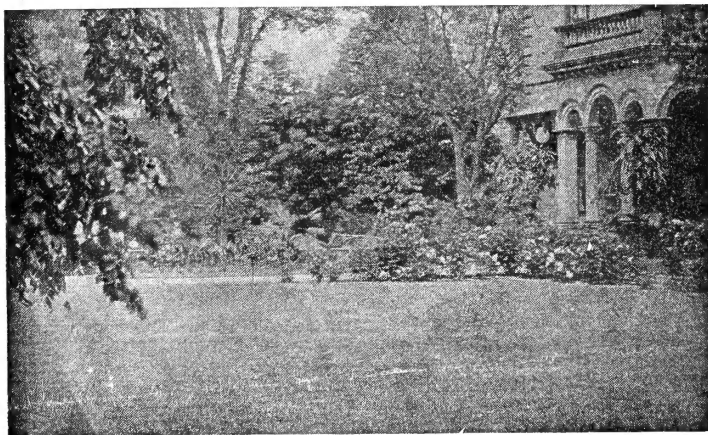
### GRASS SEED

**Waynesboro Evergreen Lawn Mixture.**—A scientifically prepared Grass Seed Mixture which produces a beautiful sod in a few weeks and is green throughout the year. Extensively used for small home grounds, as well as public parks, college campuses, large estates, and wherever a beautiful, permanent sod is desired. The extensive demand for this mixture enables us to offer it for even less than the price of common mixtures. Per lb. 50c; 10 lbs., \$4.50; 100 lbs., \$38.00.

**Shady Lawn Mixture.** Produces perfect sod in shady places. Per lb., 60c; 10 lb. bag, \$5.25; per 100 lbs., \$45.00.

NOTE: For seeding New Lawns, use 1 lb. either Evergreen or Shady Lawn Mixture to each 200 sq. ft.

**GRANULATED PEAT MOSS.** Standard 22-bushel bales. \$5.00 per bale; one-half bale, \$3.00.



Seeded with Waynesboro Lawn Mixture and Fed with Pep-To-Grow

### Sunoco

Kills Red Spider, which is the most common enemy of Evergreens. Also kills San Jose Scale, Rose Scale, Oyster-shell Scale, Pine Leaf Scale, and Euonymus Scale. 1 gallon makes 25 gallons dormant spray, or 100 gallons Summer spray. 1 Gallon Can, \$1.25; 5 Gallons, \$1.00 per gallon; 30 Gallon Drum, 75c per gallon.

### Bordeaux Mixture

An excellent fungus spray. 4 lb. bag, \$1.25 Postpaid.

**TRANSPLANTONE.** A water-soluble powder containing Vitamin B-1 and other parts of Vitamin B, plus certain hormones vital to plant and root growth.

Applied when transplanting vegetable plants, bedding plants, roses, shrubs, evergreens, and trees, it greatly reduces transplanting losses and starts plants off with more vigor and vitality.

One 3-oz. can—which makes 30 gallons solution for soaking roots or 2000 to 3000 gallons for watering—\$1.05 Postpaid.

One 1-lb. can, \$4.10 Postpaid.

### Pomo-Green with Nicotine

Complete protection against Black Spot, Mildew, Leaf-Eating Insects, Aphids. Endorsed by American Rose Society.

1 lb. can, \$ .75  
 5 lb. can, \$3.00

ASK FOR QUOTATIONS ON GARDEN FURNITURE.



The New Soil Conditioner and Plant Food, "Rho-Za-Grow" has taken the guesswork out of Rhododendron growing.

Rhododendrons and their kindred Broad-Leaved Evergreens, the Azaleas, Kalmias, Andromedas, etc., are lovely things, but many planters hesitate to plant these aristocratic American Shrubs because of their exacting soil requirements.

"Rho-Za-Grow" is a scientifically balanced soil conditioner and plant food. Use it on all plants requiring sour soils. "Rho-Za-Grow" contains exactly the proper balance of acids, neutral plant food, and humus. It sours and lightens the soil, and it has high plant food content.

Prices

10 lb. bag, \$1.00 50 lb. bag, \$2.75  
 25 lb. bag, 1.75 100 lbs., 4.50

### PEP-TO-GROW

A Specially Prepared Balanced Lawn and Garden Plant Food which gives Pep and Vigor without danger of burning. We recommend an application in both Fall and Spring.

Apply Pep-To-Grow on your Lawn, Rose and Perennial Beds at the rate of 4 lbs. per 100 sq. ft.; on Shade Trees, Shrubs, Boxwoods, and other Evergreens at the rate of 1 lb. per plant or more, depending on size. Keep a supply of Pep-To-Grow on hand at all times. A 100-lb. bag costs only \$3.50; 1 ton, \$60.00.

### Bonemeal

50 lb. bag, \$2.00 100 lb. bag, \$3.50  
 Prices f.o.b. Waynesboro, Va.